

Beginner: Assessing Community Needs with Cradle-to-Career Asset Mapping

David Blount

Director of Neighborhood Strategy,
William Julius Wilson Institute,
Harlem Children's Zone

Arti Doshi

Engagement Manager, Strategic
Partnerships, William Julius Wilson
Institute, Harlem Children's Zone



EdRedesign
OPPORTUNITY FOR ALL



#PowerofPlace

Who we are



David Blount

Director, Neighborhood Strategy
William Julius Wilson Institute,
Harlem Children's Zone



Arti Doshi

Engagement Manager, Strategic Partnerships
William Julius Wilson Institute,
Harlem Children's Zone

Our North Star

We are guided by our North Star, which we define broadly as our vision and long-term goal.







Through our work with communities, **one million young people** will be connected to opportunities that place them on a pathway to **social and economic mobility**. These outcomes will drive **systems change** and **scalable solutions** that are informed by research and practice.

Place-Based Cradle-to-Career

What is it?

Six Principles of Cradle-to-Career

WJWI has outlined the following six principles of neighborhood-based, cradle-to-career strategies.

Continuity	Accountability	Neighborhood-Based	Systems Change	K-12 Engagement	Proximate Leadership
					
<p>Programming within a neighborhood spans the full C2C continuum with clear links between all developmental stages.</p> <p>Services may be provided by a single organization or a collection of organizations, but they should be coordinated and connected.</p>	<p>One organization / entity is accountable for all C2C outcomes within the neighborhood</p> <p>Though multiple providers may deliver services, there is a singular centralized body taking responsibility across the continuum.</p> <p>Accountable entity leverages data to inform outcomes.</p>	<p>The programming is rooted in and designed for a particular neighborhood with a focus on the most historically underserved communities.</p>	<p>The effort engages systems leaders and leverages conditions of systems change* to support the formation and sustaining of contiguous, accountable, neighborhood-based strategies.</p> <p>Systems change/related efforts provide access to sustainable funding for efforts over time.</p>	<p>The approach includes a focus on K-12 education, given the central role the system plays in shaping children's outcomes</p> <p>This focus may involve working to influence school systems, operating / partnering with a K-12 school, or operating / partnering with after school, weekend, and / or summer programs</p>	<p>Members of the community being served lead the effort.</p> <p>Leaders should have deep connections and longstanding relationships within the community.</p>

Cradle-to-career 'ideal state' frame

Cradle-to-career continuum:

Health & wellness

Family & community engagement

Early childhood

Elementary school

Middle school

High school

College and career

Economic mobility



Example programs and services:

- Physical health & wellness (e.g., fitness programs)
- Emotional and mental health (e.g., trauma counseling)
- Food and nutrition programs

- Community benefits support (e.g., legal counseling, enrollment support)

- Parenting education (e.g., The Baby College)
- Pre-school preparation (e.g., The Three-Year Old Journey)
- Pre-school (e.g., Harlem Gems)

- Quality elementary education
- Wraparound in-school, after-school, and summer programs
- K-5 after-school academic and creative enrichment programs (e.g., A Cut Above)

- Quality middle school education
- Wraparound in-school, after-school, and summer programs
- Grades 6-8 after-school academic and creative enrichment programs (e.g., A Cut Above)

- Quality high school education
- Wraparound in-school, after-school, and summer programs
- College preparation support
- STEM career programs

- Higher education support
- Career support and workforce development

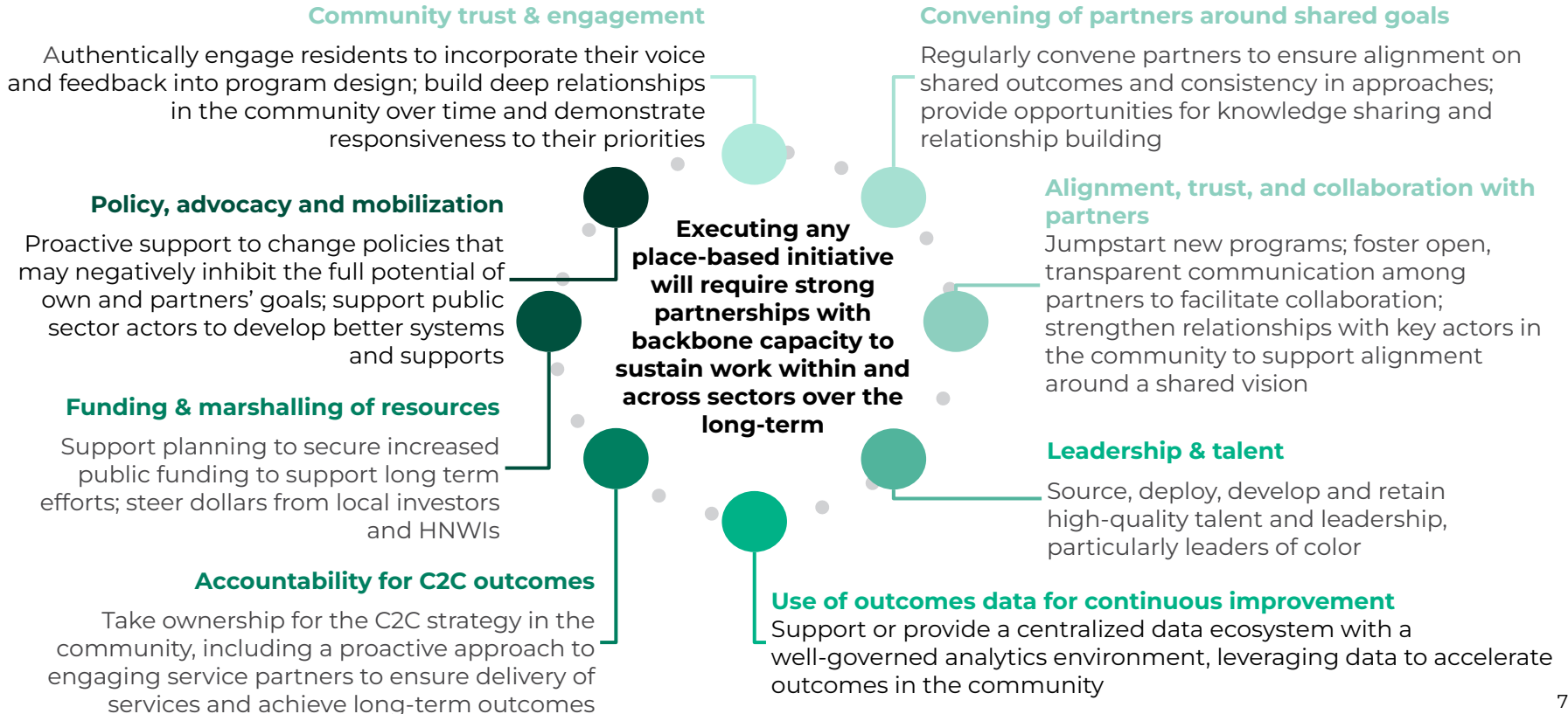
- Financial literacy and mobility programs

In addition, ideal state programming accounts for the relevant socioeconomic needs of the population (e.g., provides immigration services in areas where relevant) and ties into relevant strategic opportunities

Cross-cutting continuum enablers:

Social environment and political capital	Effects of social network context (e.g., family, friends, peers)
Built environment	Physical infrastructure (e.g., housing, transportation, broadband access, community centers)
Economic environment	Economic prospects available (e.g., job availability, entrepreneurship pathways)
Public systems and infrastructure	Federal, state, and local government infrastructure (e.g., safety net)

Backbone organizations often play some combination of these functions



Developing Place-Based Cradle-to-Career Partnerships

Early Stages

Journey Map: Envision a C2C Pathway

Vision for the trajectory of children and youth from cradle-to-career



Early childhood: High quality prenatal supports and early childhood education for healthy early stages and family connections



Elementary and middle schools: Building the foundations of learning, skill development, and socio-emotional well-being



High schools: Creating opportunities for exploration and developing curious, independent lifelong learners



Post-secondary: Launching into thriving adulthood with post-secondary opportunities with social and professional networks to support goals and ambitions



Baby David attends Kindercare and his mom is connected to a parent group through a birth center...

...Little David enters Kindergarten behind in reading; Kindercare shares context on why and recommends a reading specialist to help get David back on track...

...By 3rd grade, little David is reading at grade level and ready to accelerate his learning with strong interest in history and science...

...Youth David reaches 6th grade and no longer needs a reading specialist; He excels and gets accepted to a college prep program for youth interested in bio-sciences...



Adolescent Arti moves to the neighborhood at the end of elementary school. She's on track academically...

...Adolescent Arti goes into high school with strong interest in entrepreneurship. However, she has a stretch of absences due to severe asthma and falls behind...

...An in-school clinic creates a treatment plan for Adolescent Arti that reduces her episodes and absences; she gets back on track...

...now that she's on track, she works with a college counselor to explore options for a business program and is offered an apprentice program with a local small business...

Defining Success for a Place-Based C2C Partnership

What is your vision for children and youth in your city?:		
Developmental Stage	How do you define success for each developmental stage?	What are indicators of success for each stage?
Early Childhood	<i>Every child is born into a family with adequate supports for health development</i> <i>Every child enters school kindergarten ready</i>	<i>Families connected to prenatal supports and services</i> <i>Increase access to high quality early childhood education; Improved outcomes for kindergarten readiness</i>
Elementary School		
Middle School		
High School		
Post-Secondary & Career Pathways		
Parent and Family Engagement		
Other Community Needs (Wraparound family supports, Community violence, absenteeism, etc)		

Preliminary Asset Mapping Template

Neighborhood or Feeder Pattern:		
Developmental Stage	Which organizations in your community are doing high impact work in this area?	What are the next steps to better understand existing assets in your community?
Early Childhood		
Elementary School <i>In school, after school, community-based</i>		
Middle School <i>In school, after school, community-based</i>		
High School <i>In school, after school, community-based</i>		
Post-Secondary & Career Pathways <i>In school, after school, community-based</i>		
Parent and Family Engagement		
Other Community Needs (Wraparound family supports, Community violence, absenteeism, etc)		

Sample Asset Mapping: EdVille C2C Partnership

Neighborhood or Feeder Pattern:

Developmental Stage	Which organizations in your community are doing the most high impact work in this area?	What are the next steps to better understand existing assets in your community?
Early Childhood	<ul style="list-style-type: none"> • EdState Schools Readiness • United Way of Central EdState • YMCA of Greater EdVille • Community Foundation of Greater EdVille 	<ul style="list-style-type: none"> • Asset Mapping • Engaging Stakeholders • Analyzing data and reports • Collaborating with key organizations • Create a Comprehensive Resource Directory • Utilize Technology and social media • Promote Community Awareness and involvement
Elementary School <i>In school and afterschool</i>		
Middle School <i>In school and afterschool</i>		

Turn and Talk: Teams

Within your priority neighborhood -or- school feeder pattern:

1. Which organizations are **currently engaged** in strategic efforts to improve outcomes for students?
2. Which organizations are **under engaged** but could become pivotal partners for a place-based partnership?
3. What **neighborhood strengths and gaps** are top of mind for residents and community leaders that can help inform your priorities for a place-based partnership?
 - Are services coordinated and reaching the students who need them?

Preliminary Asset Mapping Template

Neighborhood or Feeder Pattern:		
Developmental Stage	Which organizations in your community are doing high impact work in this area?	What are the next steps to better understand existing assets in your community?
Early Childhood		
Elementary School <i>In school and afterschool</i>		
Middle School <i>In school and afterschool</i>		
High School <i>In school and afterschool</i>		
Post-Secondary & Career Pathways		
Parent and Family Engagement		
Other Community Needs (Wraparound family supports, Community violence, absenteeism, etc)		

Edville C2C Partnership

Neighborhood or Feeder Pattern:

Developmental Stage	Which organizations in your community are doing the most high impact work in this area?	What are the next steps to better understand existing assets in your community?
Early Childhood	<ul style="list-style-type: none"> • EdSatet Department of Early Education • YMCA of Greater Edville • Community Foundation of Greater Edville 	<ul style="list-style-type: none"> • Asset Mapping • Engaging Stakeholders • Analyzing data and reports • Collaborating with key organizations • Create a Comprehensive Resource Directory • Utilize Technology and social media • Promote Community Awareness and involvement
Elementary School <i>In school and afterschool</i>	<ul style="list-style-type: none"> • Brown Elementary – The Heights Neighborhood Association, Greenwood Baptist Church, • Owens K-8- Edville Education Foundation, Independent Presbyterian Church 	<ul style="list-style-type: none"> • Conducting a needs and asset assessment • Better relationship building through communication with our communities • Community voice • Grants • More collaboration across the feeder pattern • Leadership to community connection – how can we involve parents/families in our buildings
Middle School <i>In school and afterschool</i>	Feeder Pattern Middle Schools: <ul style="list-style-type: none"> • GreenWood Middle - IBM, Neighborhood Association • Chipman Middle- Shades Mountain Baptist Church 	

Developmental Stage	Which organizations in your community are doing the most high impact work in this area?	What are the next steps to better understand existing assets in your community?
High School <i>In school and afterschool</i>	Feeder Pattern High Schools: <ul style="list-style-type: none"> • Jackson Olin High School -Gardendale First Baptist, Church of the Highlands, Jones Valley Teaching Farm, Catalyze Edville • Highland High School- EdSatet Power, Church of the Highlands, Dream Center, Woodlawn United, Jones Valley Teaching Farm, Regions Banks, PNC • Stockdale High School: Shades Mountain Baptist Church, Church of the Highlands, Sixth Ave Baptist Church, Edville Neighborhood Association 	<i>See prior page</i>
Post-Secondary & Career Pathways	Edville Promise -Edville City scholars can receive full tuition to instate colleges plus college Prep SAT Tutoring, College Consultations Central Ways - Creating a 21 st century workforce by bridging the gap between education and the workforce Career Tech - offers construction and work-based learning experiences to accepted scholars	<ul style="list-style-type: none"> • Asset mapping sessions to identify what exists, where there is overlap, and how to increase opportunities
Parent and Family Engagement	Helping Families Initiative	<ul style="list-style-type: none"> • Promoting opportunities for family involvement • Encouraging Family Feedback
Other Community Needs (Wraparound family supports, Community violence, absenteeism, etc)	<p style="text-align: center;">Student Support Services:</p> Child Health: EdState Regional Medical Service Clinic, Vision Screenings and Scoliosis screening Counseling: Thrive Peer helps, Junior Achievement, College Prep U-FAFSA Completion Social Emotional Learning (SEL): Let's Talk-Mental Health Services, Growing Kings-Mentorship Programs, Thrive Counseling Services Attendance: Helping Families Initiative-Homelessness, and Truancy	<ul style="list-style-type: none"> • Educating our families and communities on the proper processes and procedures to receive the services needed •

Closeout: 2-3 share outs

- Most **helpful takeaway** as you leave this session
- Who are the **other partners** we need to engage and leverage?
- Where do we need **external** help?
- One **lingering question** you still have?

Let's Connect!



At Marjorie Children's Zone



Thank You



At Harlem Children's Zone