

Transforming Place through Neighborhood Leadership

SUMMER INSTITUTE

JULY 10-12, 2024

Exposure Workshop:

Building Evaluation Capacity for
Cradle-to-Career Neighborhood-Based Work

1:30 – 2:30 pm



Exposure Workshop: Building Evaluation Capacity for Cradle-to-Career Neighborhood-Based Work

Amy Susman-Stillman

Vice President of Evaluation,
Northside Achievement Zone

Rajni Banthia

Vice President of Evaluation,
Mission Economic
Development Agency

Briellen Griffin

Research Scientist, Wilder
Foundation and Saint Paul
Promise

Moderator: Lynne Sacks

Research Director, EdRedesign;
Lecturer on Education, Harvard
Graduate School of Education



Session Goals

- Understand how leading place-based partnerships use data to advance their work and tell their stories
- Identify specific strategies and practices to support your own partnerships and overcome common challenges
- Learn about the Place-Based Partnerships Data and Evaluation Working Group



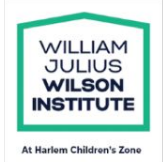
@WJWInstitute

@EdRedesignLab

#PowerofPlace

Place-Based Partnerships Data and Evaluation Working Group

- The group's goal is to come together across models to better leverage data and evaluation to promote economic and social mobility by sharing expertise and best practices and to define a common agenda for future research and action.
- The working group is comprised of national field catalysts (EdRedesign, William Julius Wilson Institute, StriveTogether, Purpose Built Communities, and Partners for Rural Impact) and local affiliates.
- A white paper is in development.



@WJWInstitute

@EdRedesignLab

#PowerofPlace

Key Issues Identified by the Working Group

- Measuring the impact of the backbone organization
- Using data to impact policy
- Identifying system-level and non-academic metrics
- Embedding community voices and elevating qualitative data



@WJWInstitute

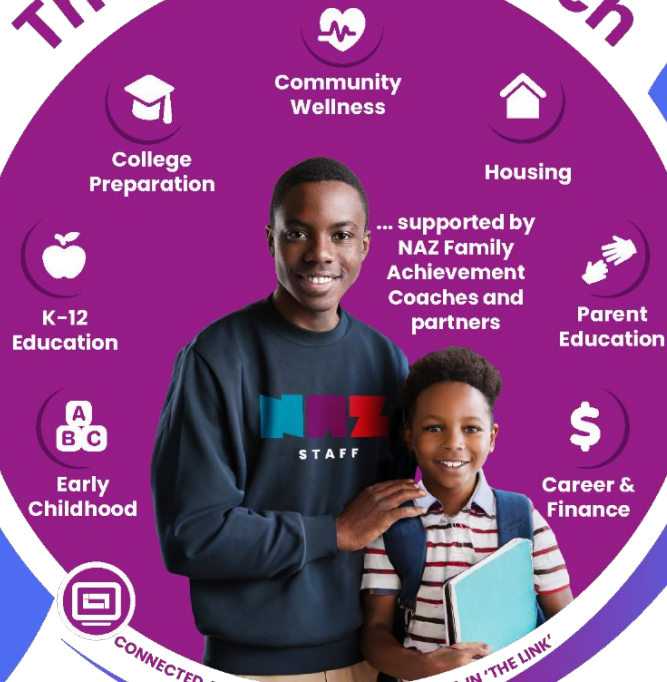
@EdRedesignLab

#PowerofPlace

The NAZ Approach

Northside Families

Parents, caregivers, and their scholars



CONNECTED AND INFORMED BY SHARED DATA IN 'THE LINK'



... preparing the next generation.

Northside Prosperity

Data and Evaluation Work at NAZ



Develop and implement evaluation strategy aligned with the strategic business plan

- Center equity
- Manage data
- Build a data culture
- Track quarterly progress
- Produce annual results
- Support continuous learning/improvement
- Share results
- Review literature
- Create new knowledge

Mission Economic Development Agency (MEDA)

- Established in 1973
- Based in San Francisco's Mission District
- Primarily serve low-income Latino families, including monolingual Spanish speakers and immigrants
- Backbone agency for Mission Promise Neighborhood (MPN) collective impact/cradle to career initiative
- 100 staff

Comprehensive Community Development Services

- Housing connection and development
- Workforce development
- Education supports
- Asset building
- Policy advocacy
- Small business development

MEDA Evaluation Department

KEY RESPONSIBILITIES

Establishing and managing MEDA's data systems

Demonstrating impact of our work via data analysis and reporting

Advancing program improvement through internal assessments

Using data to strengthen MEDA's advocacy efforts

Use human-centered design approach to align data with staff perspectives

Collaborate in regular cycle of process evaluations for program improvement

Foster culture of evaluation and shared ownership

Center community voices and perspectives

STRATEGIC PRIORITIES



**SAINT PAUL
PROMISE**

THINK PROUD. THINK RADICALLY. THINK SAINT PAUL

Saint Paul Promise (St. Paul, MN)

Our Mission

We exist to transform learning, improve educational outcomes and spark abundant opportunities from cradle to career - for all children and families in Saint Paul.

Who We Serve

41% of Saint Paul residents are living on less than \$35,000 per year and over 26% of the city's population have an income below the federal poverty level. For those in our community that are living below the poverty level, 38% are home to children in the K-12 education system.

**SAINT PAUL
PROMISE**

How We Work

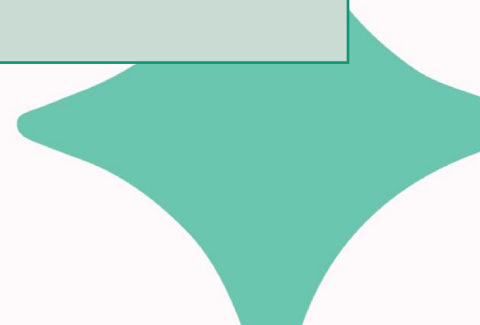
We promote economic justice and support life-long learning, from cradle to career, through a whole family and two-generation approach, collective impact, and place-based strategy.



How We Work: Programs

We promote economic justice and support life-long learning, from cradle to career, through a whole family and two-generation approach, collective impact, and place-based strategy.

Education	Wellbeing	Advocacy + Systems Change
<ul style="list-style-type: none">• Thrive By Five• K-12 Learning• Extended Learning Opportunities• ProjectBOLD Family Success Coaching	<ul style="list-style-type: none">• Whole Family Stability• The People's Fellowship	<ul style="list-style-type: none">• Promise Advocates Cohort• Ongoing action initiatives



How We Work: Data + Evaluation

- Cultivate strong relationships
- Build data infrastructure
- Align indicators with programs
- Solidify data sharing
- Design tools for growth
- Create learning loops
- Share data with community
- Make decisions in community



PROUD. THINK RADICAL. THINK SAINT PAUL. THINK PROUD. THINK RADICAL. THINK SAINT PAUL. THINK PROUD. THINK RADICAL. THINK SA

Contact Us

Data + Evaluation

Briellen Griffin

Briellen.griffin@wilder.org

General Information

<https://saintpaulpromiseneighborhood.com/>

**SAINT PAUL
PROMISE**