

OPPORTUNITY FOR ALL
EDREDESIGN
THE EDUCATION REDESIGN LAB



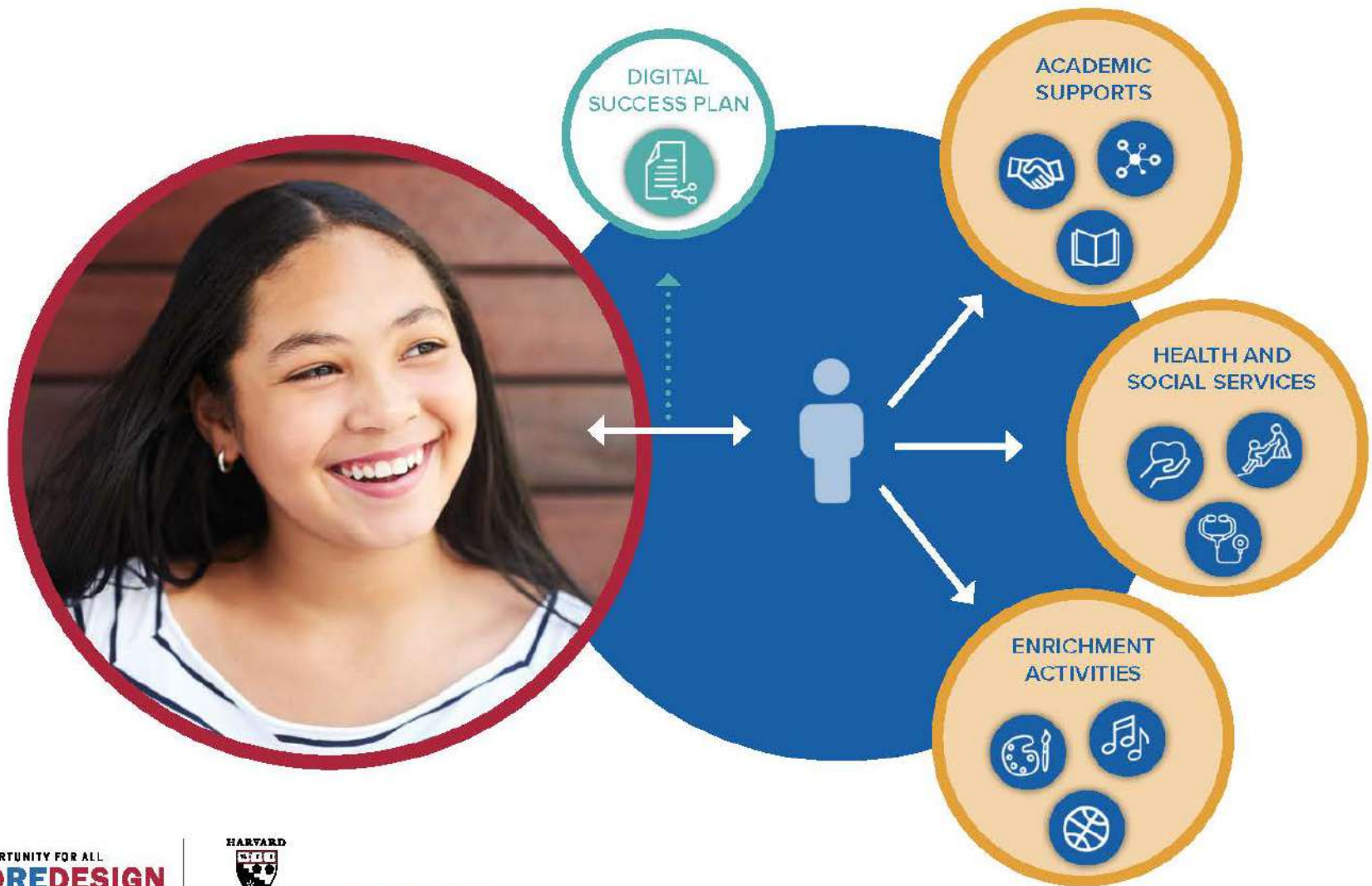
JUST RELEASED...

*New resources to guide the development
and implementation of Success Plans*

#ByAllMeansHGSE 

WHAT ARE SUCCESS PLANS?

Success Plans are dynamic tools for capturing children and youth's strengths, interests, and needs and matching them with customized supports and opportunities—both in and out of school.



10 GUIDING PRINCIPLES FOR SUCCESS PLANS

Equitable

Information-
Driven

Student-
Centered

Actionable

Personalized

Comprehensive

Relationship-
Driven

Cross-Sector

Secure

Sustainable

NEW REPORT

SUCCESS PLANS

*Promising Tools for Customizing
Student Supports and Opportunities*

APRIL 2019



OPPORTUNITY FOR ALL
EDREDESIGN
THE EDUCATION REDESIGN LAB



COMPREHENSIVE PLANS

ENTITY	TYPE OF PERSONALIZED PLAN
<p>City Connects Boston, MA</p>	<p>Tailored student support plans for all students (mostly grades K-8)</p>
<p>Communities In Schools Arlington, VA</p>	<p>Individual support plans for K-12 students receiving case management services</p>
<p>Colorado Department of Education Denver, CO</p>	<p>Individual School Readiness (ISR) plans required for preschool and kindergarten children</p>
<p>National Center for Youth Law Oakland, CA</p>	<p>Individualized plans for youth involved in child welfare and justice systems</p>

WHAT DID WE LEARN?

Select Main Findings

- Primarily being implemented through a **school-based approach**
- Represent a strategy for promoting **equity and access**
- Strong emphasis on bolstering **youth involvement in learning experiences**
- **Variance** related to making **referrals for support services**
- **Differentiated access to data** and **proactive data agreements**



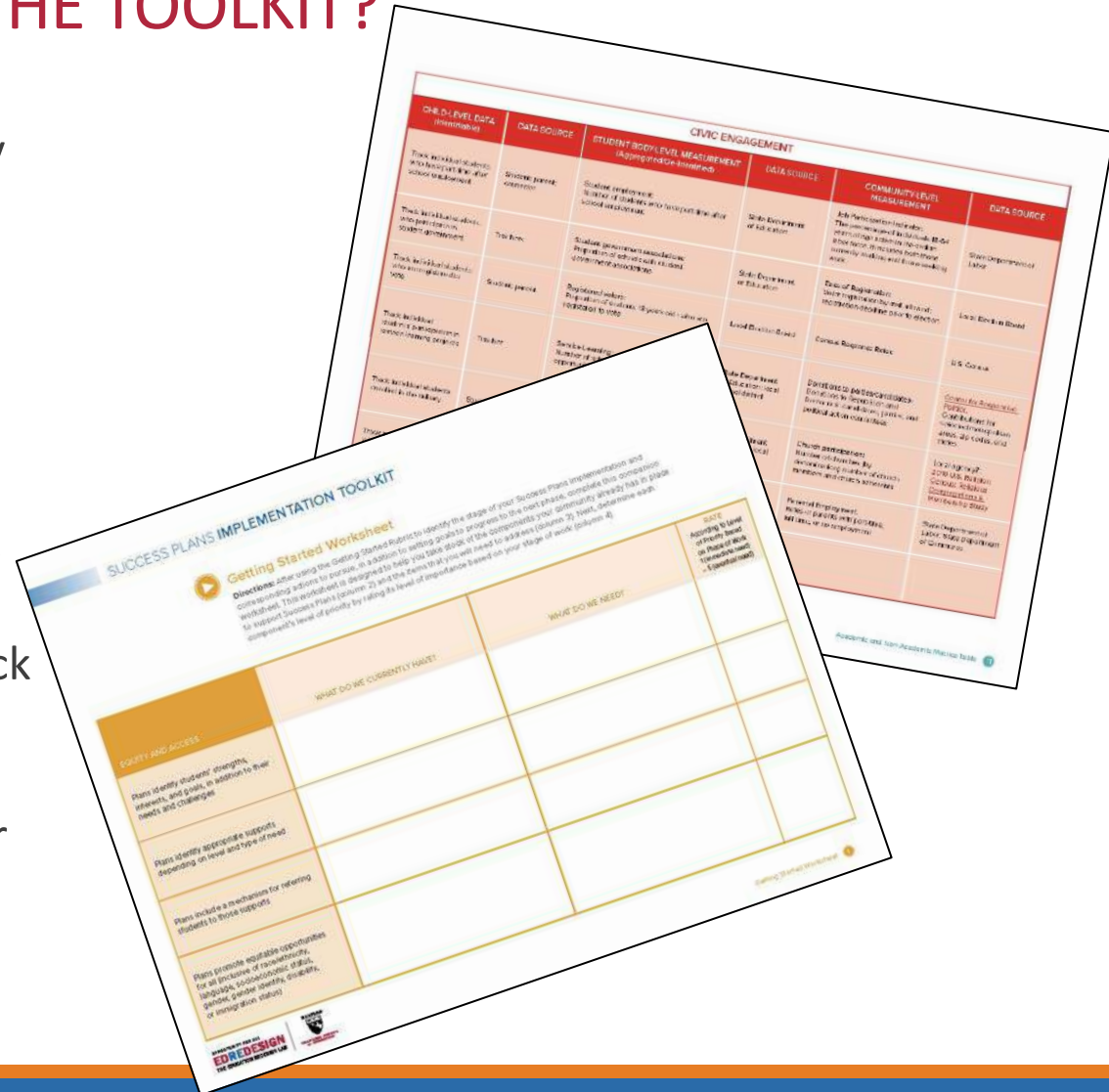
**CHALLENGES
AHEAD**

5 KEY RECOMMENDATIONS

- Create a **Cross-Sector Governance/Management Structure**
- Establish **Networks of Support**
- Designate **Community, District, and/or School Coordinators** to Facilitate the Development and Implementation of Plans
- Use Digital Tools that Adhere to Strict **Data Security Practices**
- Embed **Equity and Access** in Every Aspect of the Work

REMIND ME AGAIN... HOW EXACTLY DO I USE THE TOOLKIT?

- Set the long-term vision for Success Plans in your community
- Identify key actions to pursue during different stages of the work
- Decide which components to prioritize based on stage of work
- Select potential indicators to track and corresponding data sources
- Make initial decisions about your community's implementation efforts



SUCCESS PLANS IMPLEMENTATION TOOLKIT

Getting Started Worksheet

Directions: After using the Getting Started Rubric to identify the stage of your Success Plans implementation and corresponding actions to pursue, in addition to setting goals to progress for the next phase, complete this completion worksheet. This worksheet is designed to help you take stock of the components your community already has in place to support Success Plans (column 2) and the items that you will need to address (column 3). Next, determine each component's level of priority by rating its level of importance based on your stage of work (column 4).

	WHAT DO WE CURRENTLY HAVE?	WHAT DO WE NEED?	SCALE According to level of priority based on current status, resources, and time (1-5)
EQUITY AND ACCESS			
Identify students' strengths, interests, and goals, in addition to their needs and challenges			
Identify appropriate supports depending on level and type of need			
Identify a mechanism for referring students to those supports			
Plan (provide equitable opportunities for all inclusion of race/ethnicity, language, socioeconomic status, gender, gender identity, sexuality, or English learner status)			

ONE-LEVEL DATA (Indicators)	DATA SOURCE	STUDENT BODY-LEVEL MEASUREMENT (Appropriation Indicators)	DATA SOURCE	COMMUNITY-LEVEL MEASUREMENT	DATA SOURCE
Track the total number of students who are enrolled in the school district	Student Profile Generator	Student performance: Student of color, who are eligible for state-level assessment	State Department of Education	Job Performance Indicators: The percentage of students who are employed in a field related to their area of study from their secondary studies and apprenticeship	State Department of Labor
Track the total number of students who are participating in career development	Track form	Student performance: Percentage of students who are eligible for state-level assessment	State Department of Education	Rate of Registration: The percentage of students who are registered for the next level of education	Local Board of Education
Track the total number of students who are completing college	Social media	Registered students: Percentage of students who are eligible for state-level assessment	Local Board of Education	Career Response Rate: The percentage of students who are employed in a field related to their area of study from their secondary studies and apprenticeship	U.S. Census
Track the total number of students who are participating in career development	Track form	Registered students: Percentage of students who are eligible for state-level assessment	Local Board of Education	Employment in Career Fields: The percentage of students who are employed in a field related to their area of study from their secondary studies and apprenticeship	U.S. Census
Track the total number of students who are completing college	Track form	Registered students: Percentage of students who are eligible for state-level assessment	Local Board of Education	Employment in Career Fields: The percentage of students who are employed in a field related to their area of study from their secondary studies and apprenticeship	U.S. Census

GROWING SUCCESS PLANS FROM THE GROUND UP

