

# The Diplomas Now Partnership and Model

- 1 Partnership** - Generate greater student outcomes through creating a new school improvement collaboration combining Talent Development's whole school reform practices with City Year's Whole School Whole Child services and Communities In Schools' integrated student supports to partner with the nation's highest need secondary schools



Johns Hopkins University's Talent Development Secondary provides curriculum/instruction support and early warning system



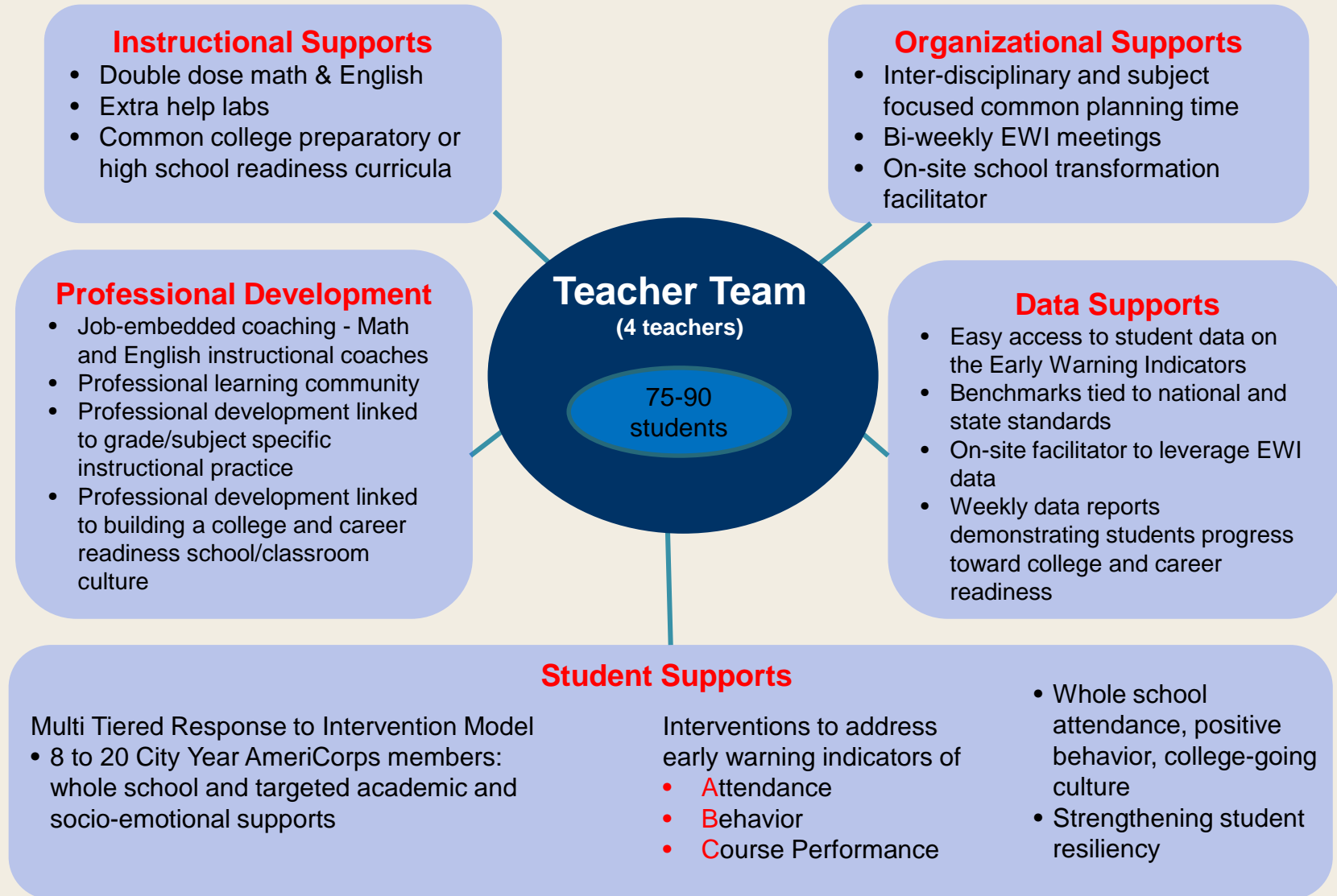
City Year's "near peer" AmeriCorps members provide individualized, whole-class and whole school academic and social-emotional support



Communities In Schools provides case-managed support to students with the highest needs

- 2 Model Dissemination** - Drive systemic change through validating and promoting the broad adoption of early warning indicator systems combined with evidence-based whole school reform practices, academic and socio-emotional supports powered by national service and master level case management

# Surrounding Teachers and Students with Support



# How CIS Serves Students and Improves School Communities

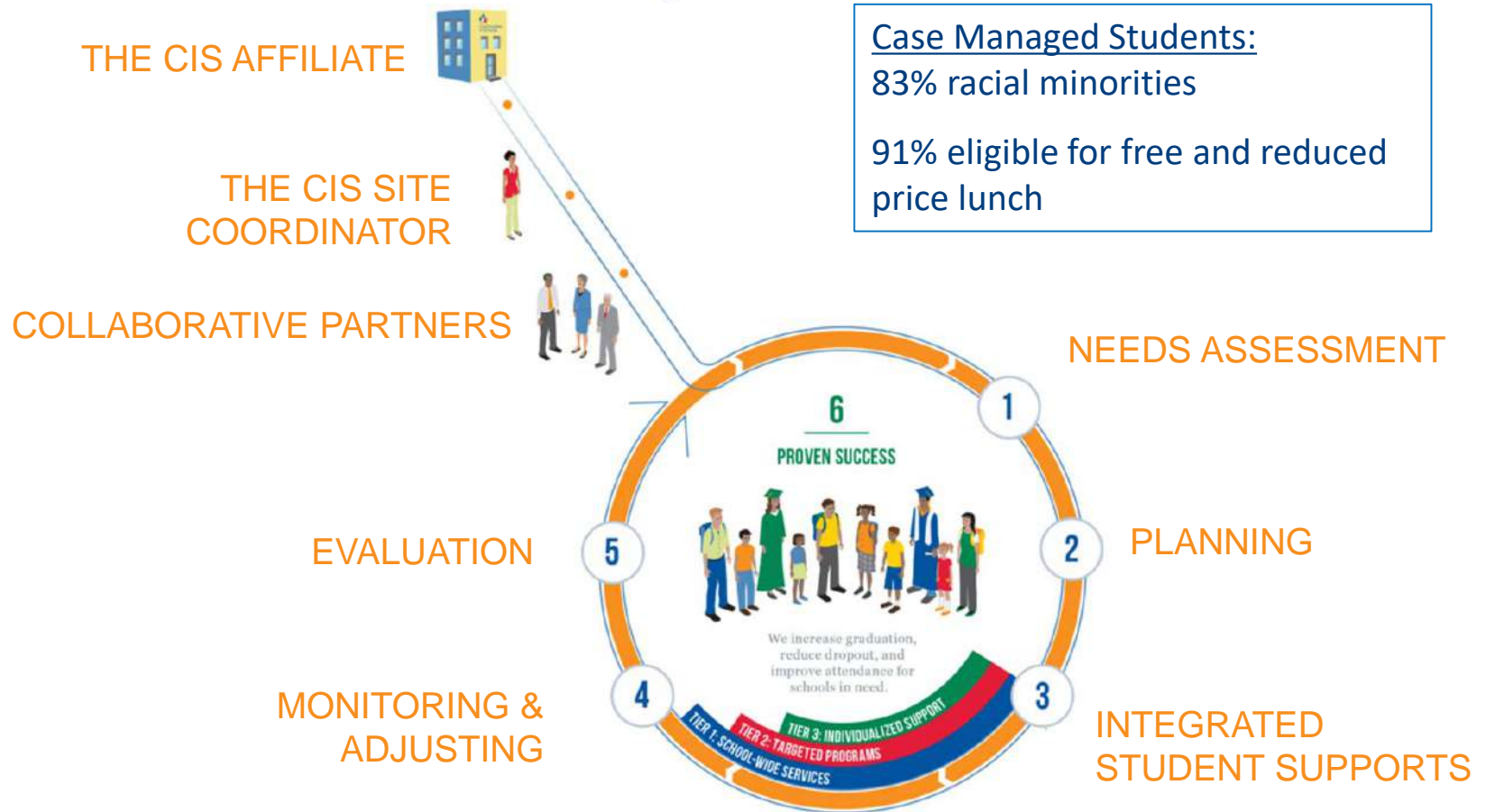


- Academic assistance
- Basic needs
- Family engagement
- College/career
- Behavioral interventions
- Life skills
- *Whatever it takes*

1 SCHOOLS WITHOUT CIS

SCHOOLS WITH CIS

# The Intersection of Poverty, Race and Education: The CIS Model



# SCHOOL YEAR 14-15

## Numbers and Outcomes



**1.5 MILLION**

students and their families were directly connected to essential resources



**158,000**

students were case-managed



**2,300**

schools and community-based sites partnered with Communities In Schools



**224,000**

parents, families and guardians participated in their children's education through opportunities provided by Communities In Schools

### NUMBERS



**3,800**

nonprofit and youth development professionals carried out the Communities In Schools mission



**10,100**

community partner organizations benefited at-risk students



**38,000**

community volunteers donated their time



**93%**

of eligible seniors graduated



**93%**

of K-11 students were promoted to the next grade

### OUTCOMES

for case-managed students



**99%**

remained in school at the end of the 2014-15 school year



**78%** met ATTENDANCE goals

**85%** met ACADEMIC goals

**89%** met BEHAVIOR GOALS

# Brokered and Provided Basic Need Services

Basic Needs	Tier 1	Tier 2	Tier 3	Outcomes	Financing
<b>Food</b>	Food Banks, Thanksgiving Food Drives, Back Pack Buddy, Universal breakfast, Access to local food banks	Weekend back pack programs, snack program for after school program	Assistance with TANF application, Food pack delivery services for families	Improve Attendance	In-Kind donations, partner organizations
<b>Shelter</b>		Provide furniture to families, Utility referrals to community agencies, Help families with bug infestations	Assistance to homeless students, Utility referrals to community agencies	Improve Attendance, Utilities are provided to families in need	In-Kind donations
<b>Clothing</b>	Uniform Drives, School wide Clothing Drives	Clothing provided to students		Improve Attendance	In-Kind donations
<b>Additional Services</b>	Hygiene Drive, Christmas Toy Drive, Back to Schools Drives, Metro bus passes, Drugs and Alcohol prevention		Case management connects families with social service providers. Assistance with Medicaid applications	Improve Attendance	In-Kind donations

# Brokered and Provided Physical Health Services

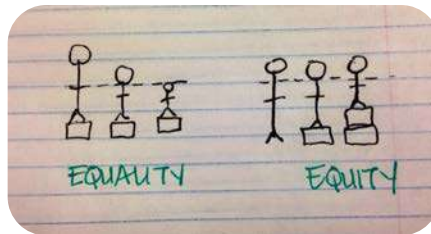
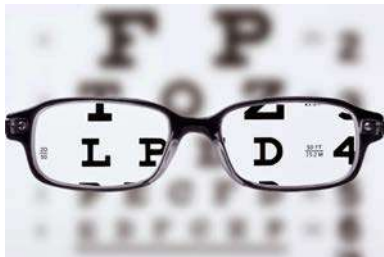
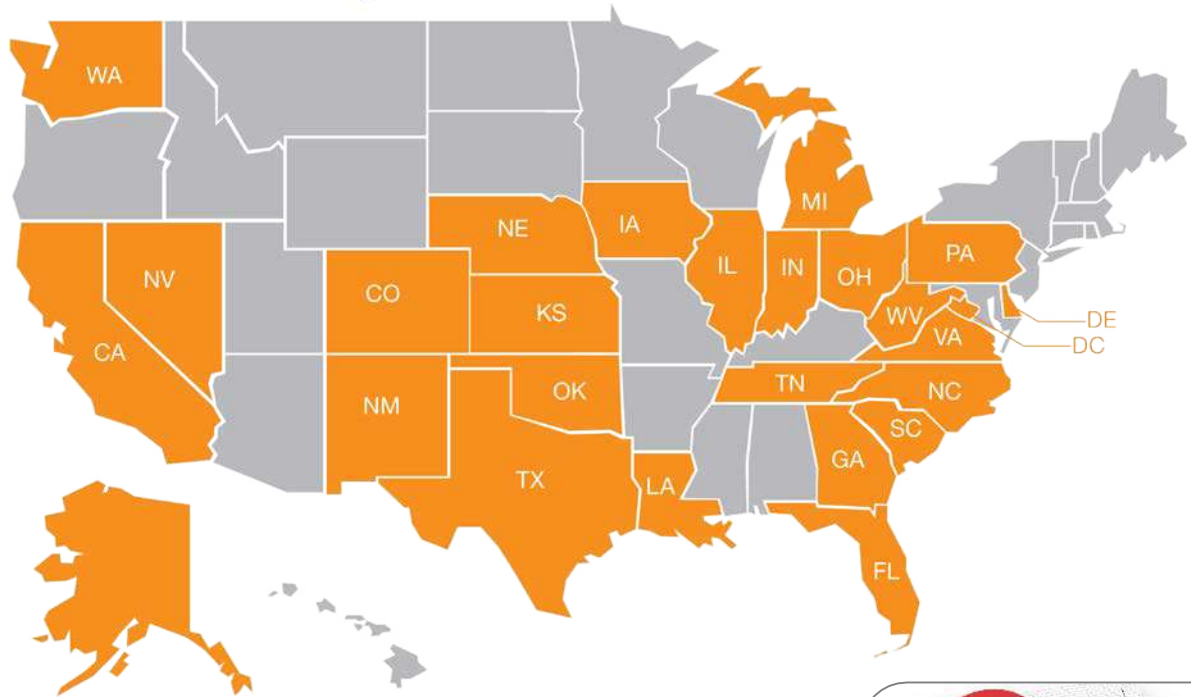
Physical Health	Tier 1	Tier 2	Tier 3	Outcomes	Financing
<b>Dental</b>	Oral health services	Mobile Dental Units		Better oral hygiene , improved attendance	Medicaid Billing
<b>Vision</b>	Eye Exams, Glasses			Improved attendance	In-Kind, Civic groups
<b>Other Physical Health Services</b>	After school fitness curriculums, Nutrition Education, Field days, Free Immunization,	Body Image support group, Groups for case manages girls, Hygiene information	After school clubs, coordinate referrals to school nurses, Access to personal trainers, Family medical referrals, Pregnancy assistance with WIC, Physicals for sports, Different exercise clubs	90% of students improved physical fitness, access to health care	County, Other organizations
	School based health clinics – on-site & virtual			Improved attendance, behavior	Federal grants, in-kind, Medicaid billing

# Brokered and Provided Mental Health Services

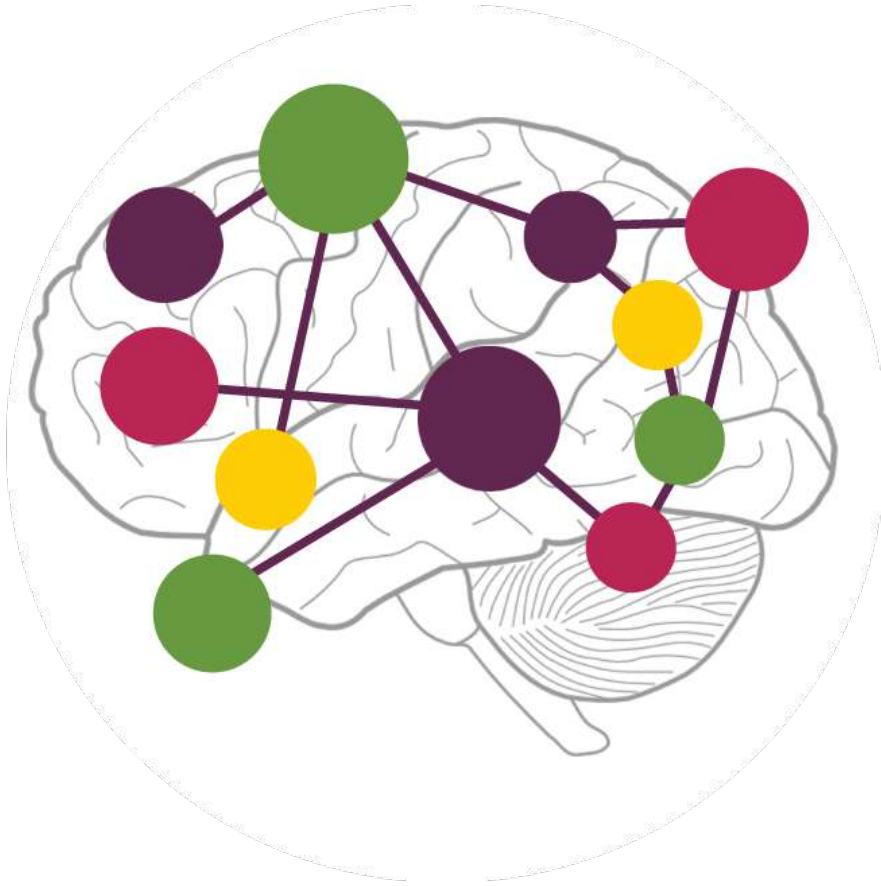
Mental Health	Tier 1	Tier 2	Tier 3	Outcomes	Financing
<b>Individual</b>			One-on-One therapy sessions , telehealth virtual sessions	Students spend more time in school based on mental health needs being met	In-Kind, ISS organizations
<b>Group</b>	Anti-Bullying presentations, Black is Beautiful Campaign, Suicide prevention and awareness, Sexual Abuse presentations	Small group counseling on anxiety, self-esteem and stress, Mentoring	Grief counseling, Violence and neglect support, suicide prevention	Students spend more time in school based on mental health needs being met	In-Kind, ISS organizations
<b>Other Mental Health Services</b>	Schoolwide suicide prevention program			Students spend more time in school based on mental health needs being met	In-Kind, ISS organizations



# Challenges & Opportunities in a Growing Network



# City Connects: Developmental Science + Best Practices



- Personalized
- Multiple domains
- Strengths and needs
- Systemic
- Engaged
- School and community

# How we do the core practice Every student, every teacher, every year

REVIEW OF EVERY STUDENT  
WITH THEIR TEACHER



INDIVIDUAL  
STUDENT REVIEW



PROPOSED  
PLAN & TIER

FAMILIES

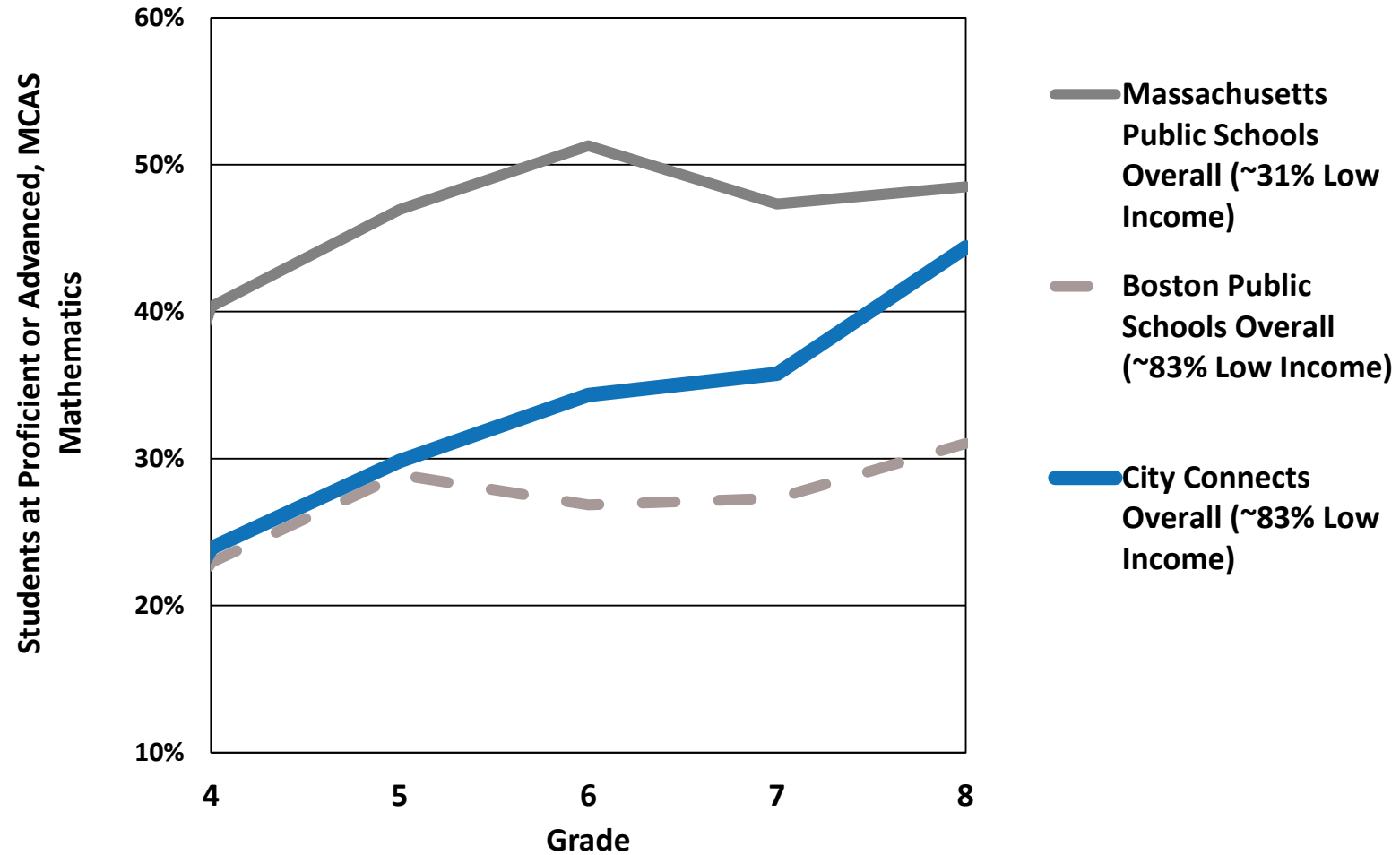


COMMUNITY PARTNERS

TAILORED SUPPORT PLAN  
FOR EVERY STUDENT



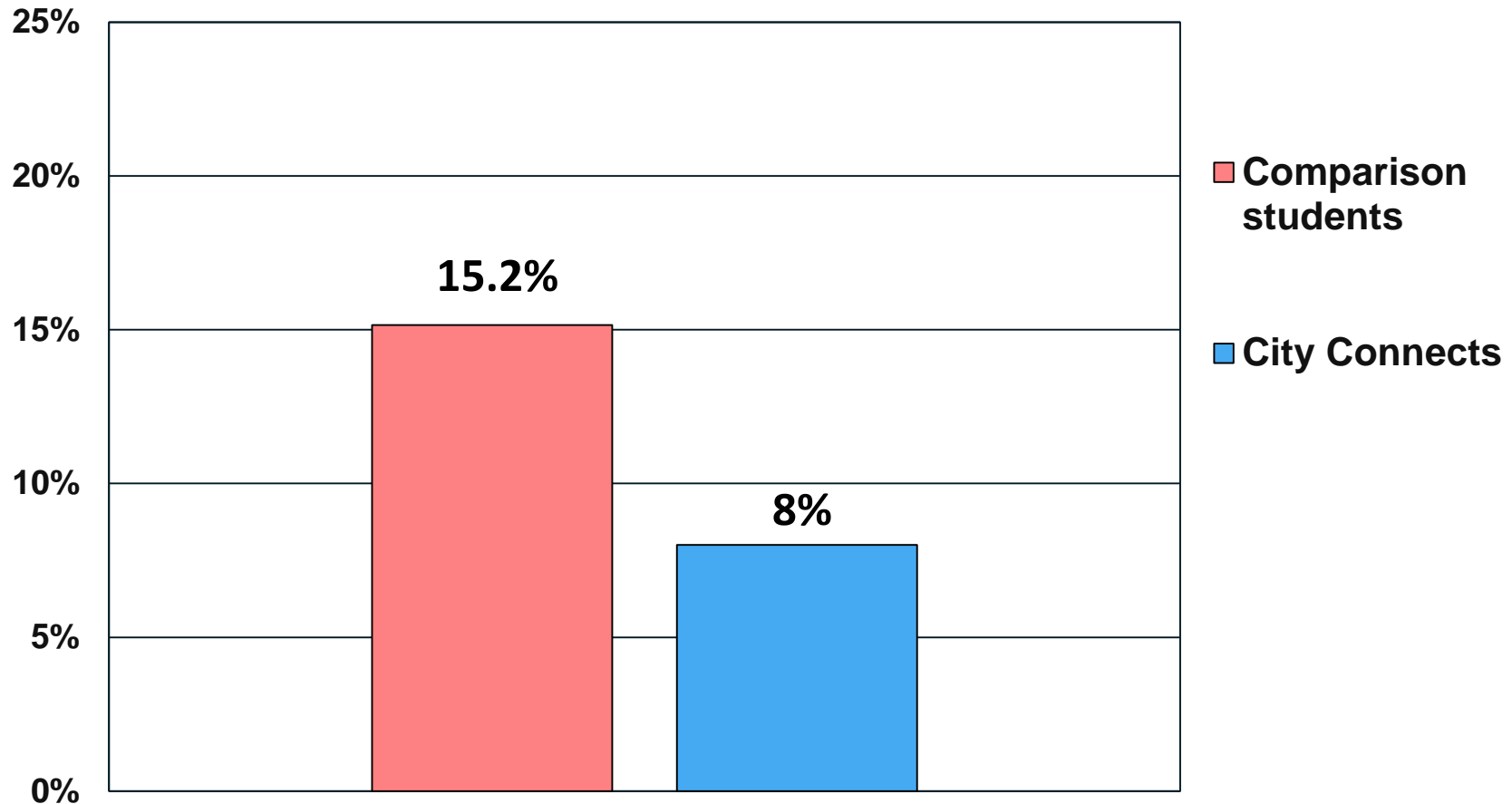
# City Connects makes a difference



# Dropout rate outcomes

City Connects students are less likely to drop out of high school

**Proportion of students who drop out  
in grades 9-12**

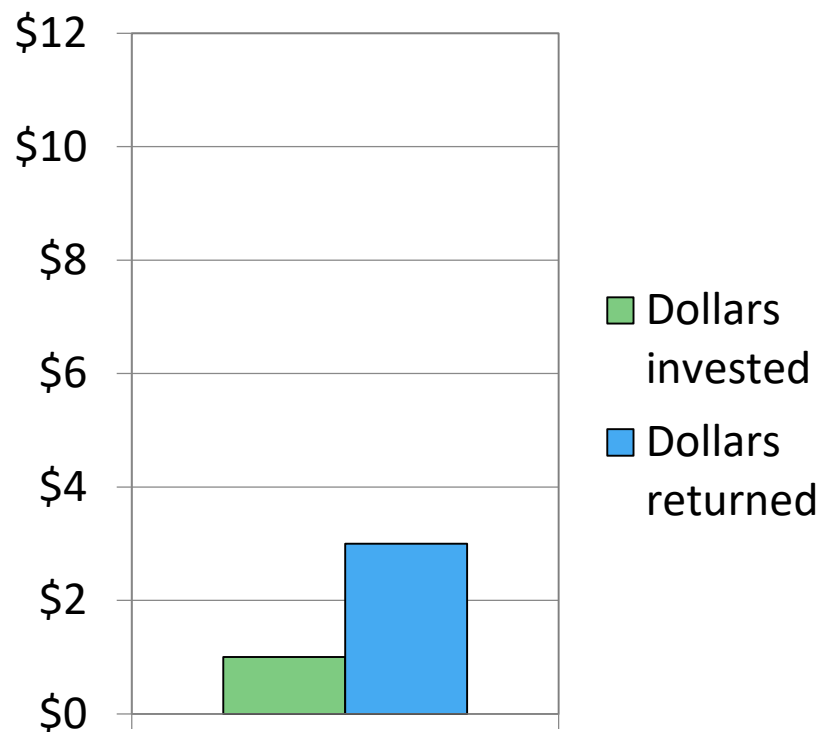




# Return on investment

*A Columbia University study validates a unique approach to helping schools tap community resources*

### Factoring in costs of City Connects and services



### Factoring in costs of City Connects only

