

# Success Planning for Every Child: A Navigator-Based Approach to Meeting Students Where They Are and Giving Them What They Need

OPPORTUNITY FOR ALL  
**EDREDESIGN**  
THE EDUCATION REDESIGN LAB

HARVARD

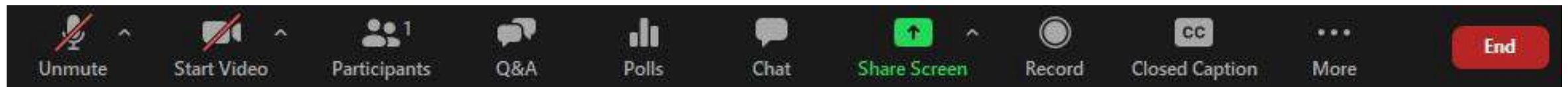


GRADUATE SCHOOL  
OF EDUCATION



# Welcome and Tech Tips

- ❑ Participants are **muted** to limit background noise
- ❑ For tech support, please send **chat message** to Jaspal Matharu (HGSE IT)
- ❑ Please submit questions in the **Q&A** function
- ❑ We are **recording** today's session
- ❑ Live captioning is available by using the **“CC”** button on the bottom of the screen



# Learning Objective



**Understand the rationale and framework for navigator-based Success Planning**

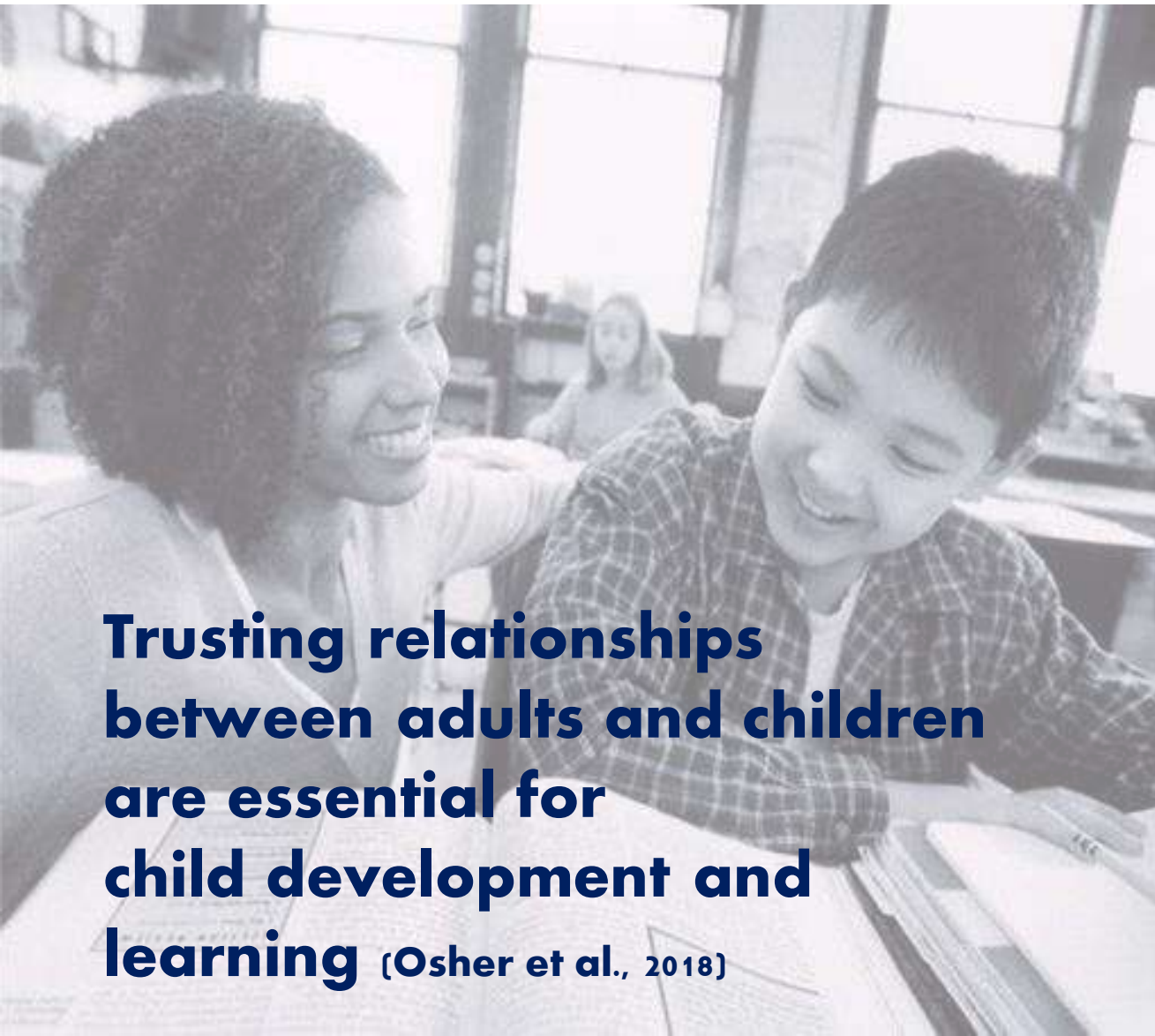
# Session Overview



- **What Problem are We Trying to Solve?**
- **Importance of Relationships for Children's Success:**  
Keynote Speaker: Karen J. Pittman, Senior Advisor, Forum for Youth Investment
- **What is EdRedesign and Success Planning?**
- **Why Now?**
- **10 Guiding Principles**
- **Q&A**



# Research shows...



**Trusting relationships between adults and children are essential for child development and learning** (Osher et al., 2018)



**Providing increased supports to children is linked with better academic and other outcomes** (Johnston et al., 2020)



# Too many children face gaps in supports and opportunities and feel disconnected





What if every child had an **individual plan for success** and a **navigator** to hold her hand and support her, ensuring she has what she needs to flourish in her journey?



# Keynote with Special Guest

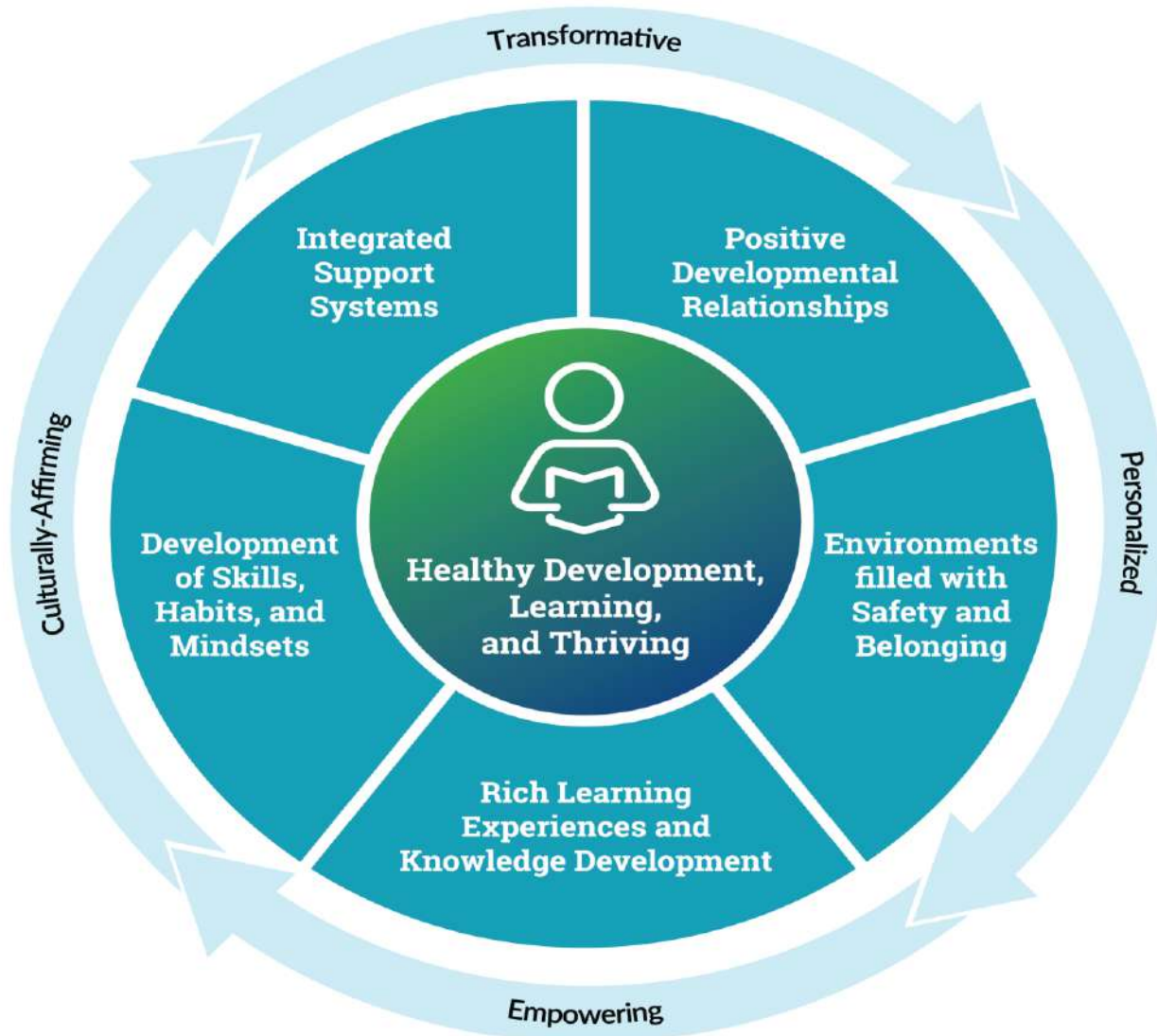


**Karen J. Pittman**

*Co-Founder, Former CEO, and Senior Fellow  
Forum for Youth Investment*



# Essential Guiding Principles for Equitable Whole-Child Design



Building from the [science of learning and development](#), each of the five elements of the wheel is grounded in a substantial body of research from diverse fields and, in many ways, are not controversial and will be familiar to and resonate with educators and practitioners. However, despite this clarity and alignment, it is challenging for districts and schools to implement truly integrated classroom and school environments. Progress has been impeded by both historical traditions and current policy built on dated assumptions about teaching and learning.

**Taken together, they are the essential ingredients to healthy development, learning and thriving.**

<https://www.soldalliance.org/post/how-can-we-design-learning-settings-so-that-all-students-thrive>

# Developmental Relationships Framework

**EXPRESS CARE**



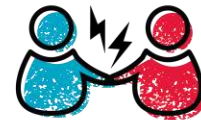
**CHALLENGE GROWTH**



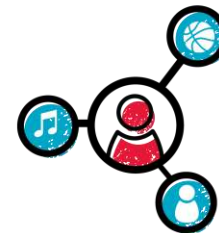
**PROVIDE SUPPORT**



**SHARE POWER**



**EXPAND POSSIBILITIES**



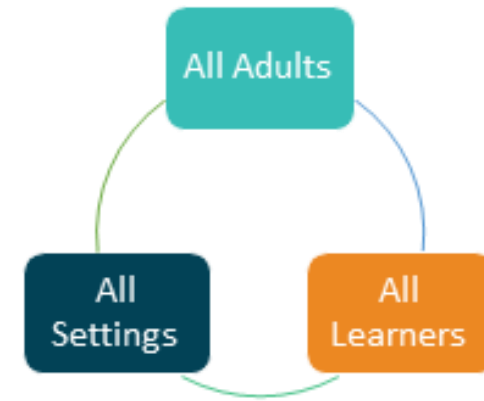
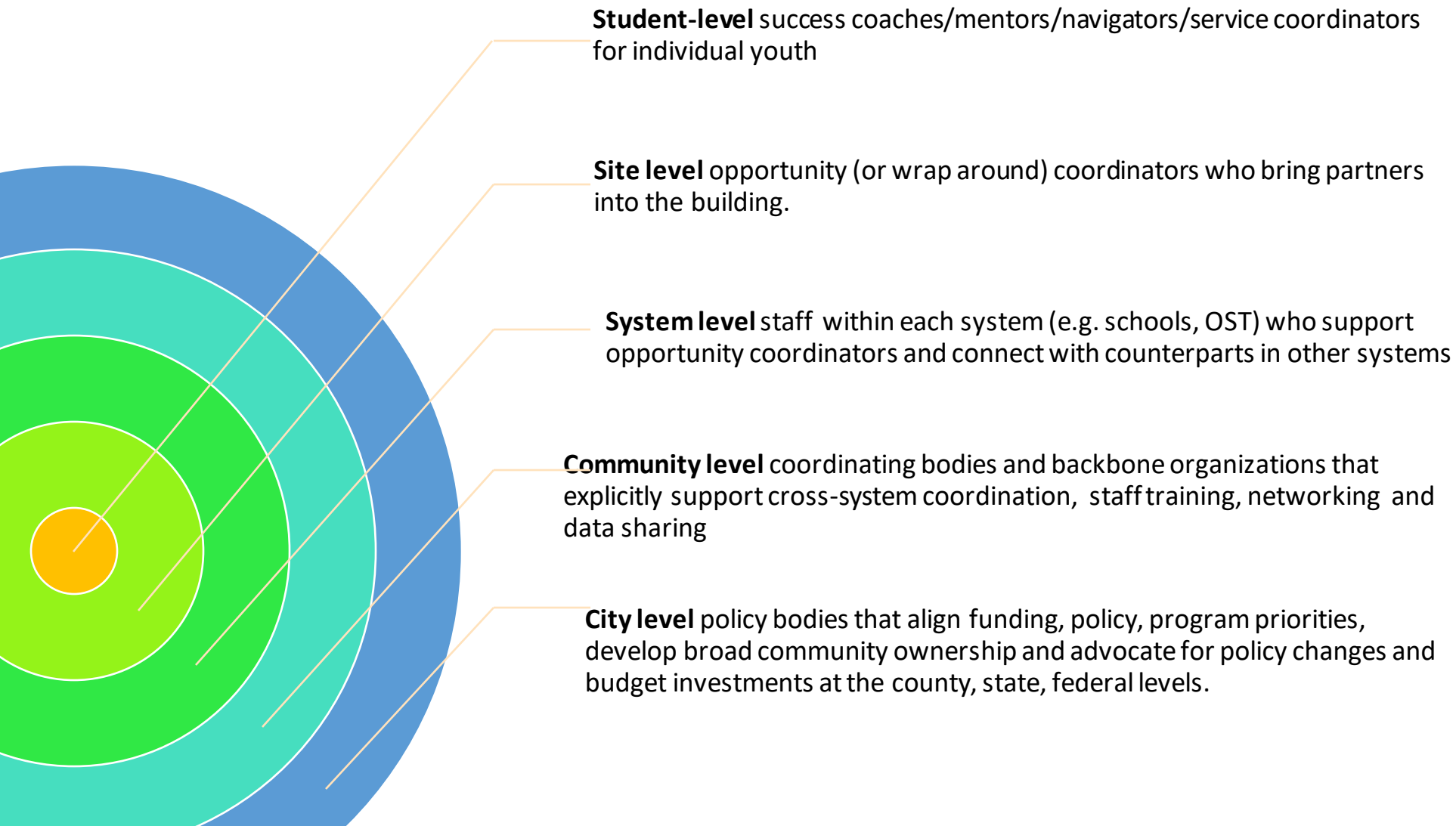
Search Institute has identified five elements—expressed in 20 specific actions—that make relationships powerful in young people’s lives. We refer to this as the developmental relationships framework.

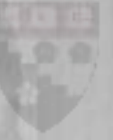
<https://www.search-institute.org/developmental-relationships/developmental-relationships-framework/>

# Leveraging *all assets* in learning ecosystems takes investments in coordination at five levels



A unified effort supported by the Forum for Youth Investment, the National Urban League, and the American Institutes for Research





OPPORTUNITY FOR ALL

# EDREDESIGN

THE EDUCATION REDESIGN LAB



# Our Vision



The new system of education and child development must support each child's needs inside and outside of school throughout their school years and all the way to employment.



“Meet them where they are.”

“Give them what they need.”



# Why Success Planning?

## Success Planning is a Practical Approach for School and Community Leaders

- Provides 360-degree view of each child's strengths, interests, goals, and challenges
- Fosters meaningful relationships between each student and a caring adult navigator who can serve as a connector to supports and opportunities
- Ensures that these relationships and supports aren't just luck of the draw



# Components

**Success Planning** - A holistic diagnostic with tools and strategies for meeting children's academic and non-academic needs

**Navigator** - An adult who works with family and student to guide that student to the opportunities and supports necessary to assure success





# Success Planning Across the Country



**California**  
Oakland

**Kentucky**  
Louisville

**Illinois**  
Partnership for Resilience - Chicago Southland  
Partnership for Resilience - Southern Illinois

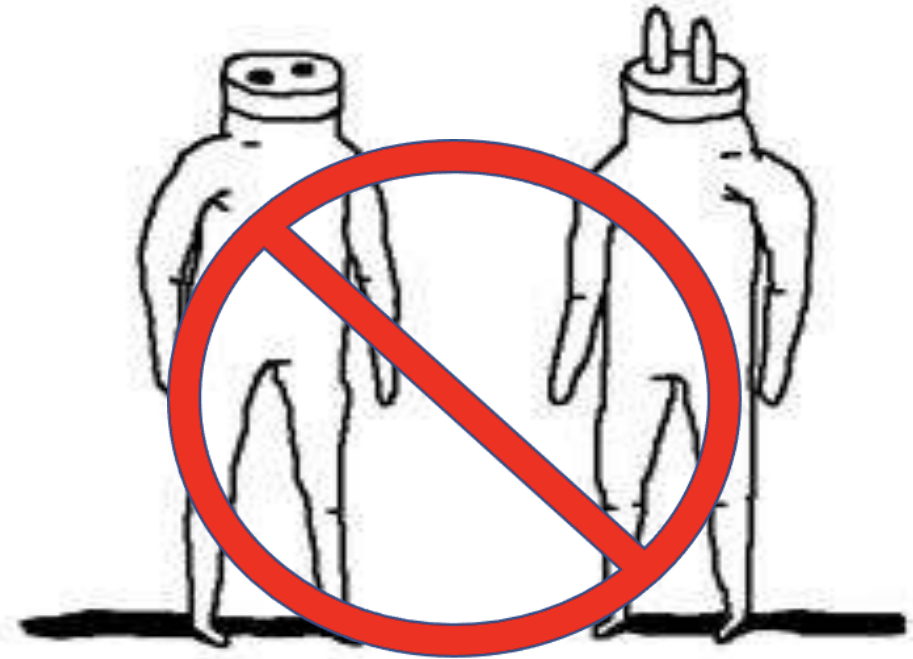
**Massachusetts**  
Salem  
Somerville

**New York**  
Poughkeepsie

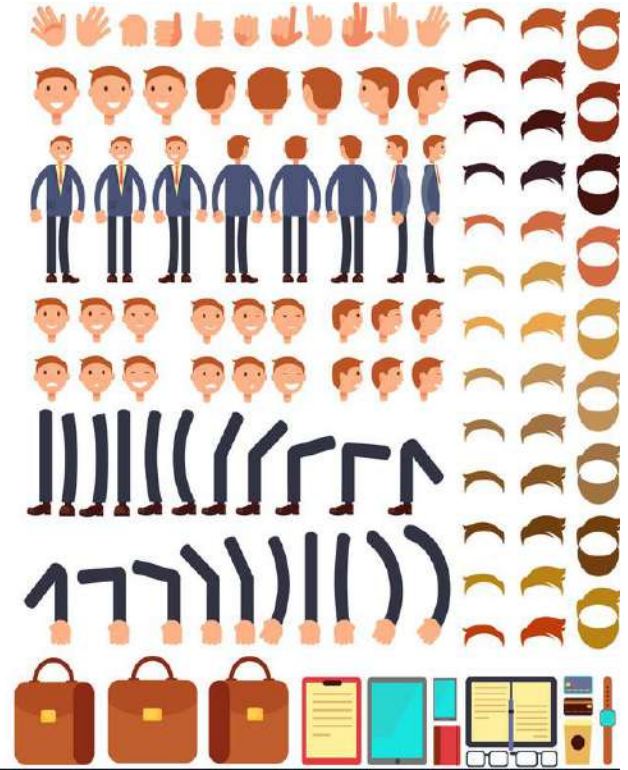
**Tennessee**  
Chattanooga-Hamilton Co.

**Rhode Island**  
Providence





PLUG & PLAY







**SUCCESS PLANNING INCLUDES EVERYONE**









**Timing is  
everything**









**SCHOOL  
CLOSED**



THE CLASS OF 1921



WE DON'T  
ALL HAVE  
HOMES  
TO GO





NO  
Justice  
No  
Peace

Racism is Not  
BORN  
It's  
TAUGHT

WE  
  
JUSTICE

NO  
JUSTICE

BLACK  
LIVES  
MATTER

ENOUGH  
ENOUGH

black  
LIVES  
MATTER!

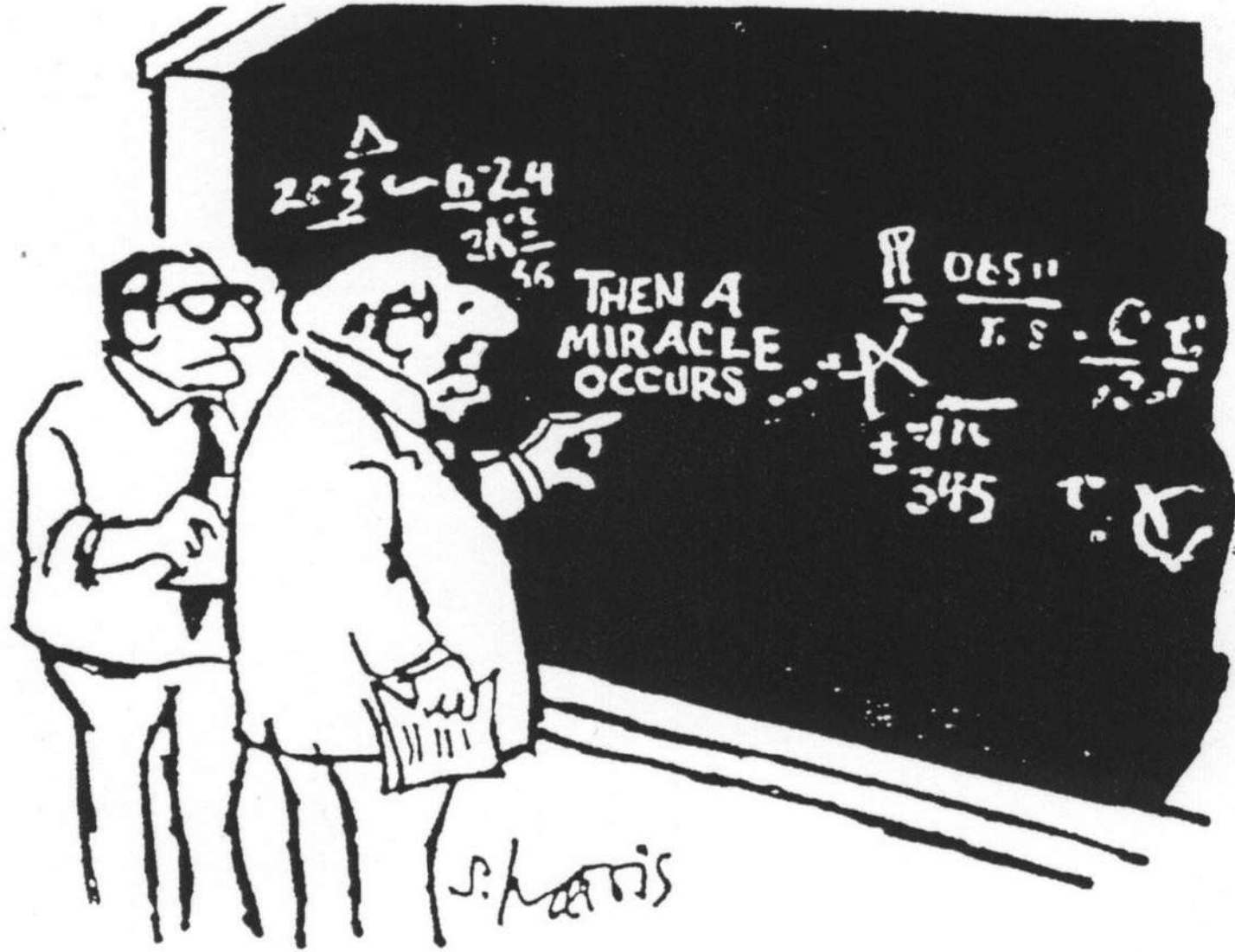
2477 315  
a day

BLM

LETTERS  
George Floyd







I think you should be a little more specific, here in Step 2

# 10 Guiding Principles



Equitable



Comprehensive



Student-Centered



Relationship-Driven



Personalized



Actionable



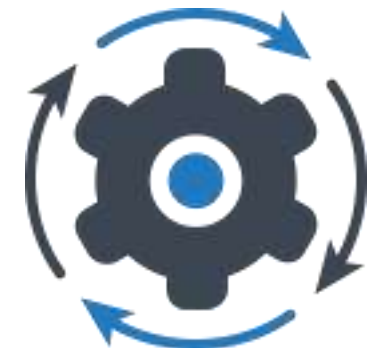
Cross-Sector



Information-Driven



Secure



Sustainable



**We are going to zoom into five of these principles**







# Online Tools and Resources: [EdRedesign.org](https://edredesign.org)





# Stay Tuned!

## Upcoming Success Planning Webinars



- Explore the nuts and bolts of Success Planning

- Delve into key issues such as:

*Who should serve as navigator?*

*What training, skills, & dispositions are needed?*

*Who supports navigators?*

*And much more!*



**YOU GET AN EMAIL!**

2004

**AND YOU GET AN  
EMAIL!**

**AND YOU GET AN EMAIL!**

**EVERYONE GETS AN EMAIL!**





Questions?





Lynne Sacks, Research Director  
[Lynne\\_Sacks@gse.harvard.edu](mailto:Lynne_Sacks@gse.harvard.edu)

8 Story Street  
Cambridge, MA 02138

Daniela Lewy, Managing Partner  
Social Determinants of Health, LLC  
[d.lewy@sdoh.com](mailto:d.lewy@sdoh.com)

@EdRedesignLab

[www.EdRedesign.org](http://www.EdRedesign.org)

OPPORTUNITY FOR ALL  
**EDREDESIGN**  
THE EDUCATION REDESIGN LAB

HARVARD



GRADUATE SCHOOL  
OF EDUCATION