

Cradle to Career Interventions

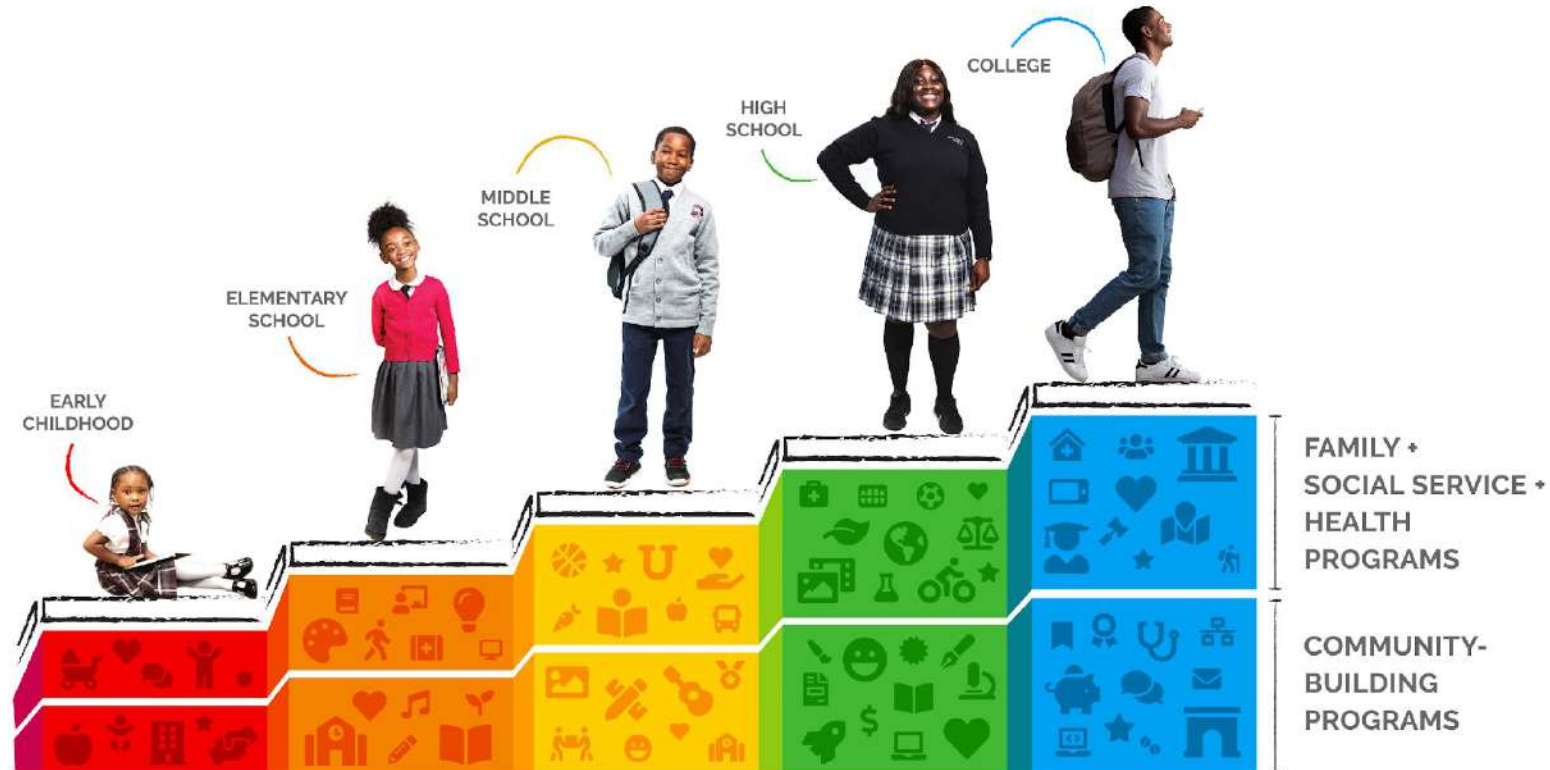
2022 Summer Training Institute



At Harlem Children's Zone

The HCZ Project

The Harlem Children's Zone operates a pathway of services, providing children and families in Central Harlem with a seamless series of coordinated, best-practice programs, focusing on children's needs from prenatal through college to career.



Defining Impact: Parent Engagement



At Harlem Children's Zone

| Key Tenet | Exemplary / Leading |
|-------------------------------|--|
| Skill Building | Activities, workshops, and resources offer parents/caregivers a strong understanding of child development and build skills |
| Social Services | Social services, home visits, and supports designed to address the emotional and social needs of parents/families |
| Information / Knowledge Share | Information and knowledge center supports caregivers/families needs and facilitates a support network |
| Advocacy | Education and support enable parent advocacy for their children's needs and access to resources and services |
| Resource Connection | Resource hub provides relevant/useful information on community supports, best practices, services, and other resources |
| Health & Wellness | Education and activities provided to caregivers around nutrition, health, wellness, and emotional well-being |
| Partnerships | Effective partnerships with local community organizations support collaboration to meet family needs |

Defining Impact: Early Childhood

| Key Tenet | Exemplary / Leading |
|--|---|
| Extended Day / Time on Task | Year-round, full-day pre-K programs ensure students are ready to enter kindergarten |
| Early Literacy / Language | Age-appropriate activities focus on vocabulary and reading, and exposure to multiple languages |
| Socialization | Small and large group activities develop critical socialization skills and build a sense of community |
| Early Intervention | Services are designed to identify and help students with developmental, health, or language needs |
| Adult:Child Ratio / Individualized Attention | Low child to adult ratios allow for more one on one work and individualized attention |
| Enrichments / Exposures | Activities allow students to explore the world around them, including through art and science, and fitness activities |
| Parent Engagement | Activities promote high parent engagement for greater consistency across home and school |

Defining Impact: K-12



At Harlem Children's Zone

| Key Tenet | Exemplary / Leading |
|--------------------------------------|---|
| Academics | Rigorous teaching and assessments of content knowledge across core subject areas with advanced courses available |
| Enrichments / Exposures | Electives, special opportunities, and activities designed to teach skills and/or knowledge in distinct content areas |
| Health & Social Services | Services, resources and activities designed to support the physical, social, emotional, and mental well-being |
| Special Education Services | Services, interventions, and supports provided to identify and support students with specialized needs |
| Character Development | Activities foster positive character development/leadership skills; discipline supports positive character-building |
| College & Career Readiness | K-12 curriculum, coursework, and activities build the skills/knowledge required for college and career |
| Use of Data / Continuous Improvement | Frequent and consistent use of data to track performance and progress; systems analyze and make data-driven decisions |
| In-Service Staff Development | Professional development and individualized coaching and feedback increase teachers' skills/expertise |

Defining Impact: K-12 Afterschool & Summer



At Harlem Children's Zone

| Key Tenet | Exemplary / Leading |
|-----------------------|--|
| Academics | Program activities designed to support students' acquisition of content knowledge and skills in core academic subjects |
| Enrichments | Program activities designed to teach or deepen skills and/or knowledge in distinct content areas (STEM, Civics, Arts) |
| Health & Wellness | Program activities and resources designed to support the physical, emotional, and mental well-being of students and families |
| Healthy Relationships | Students build meaningful connections with stakeholders (peers and adults) that create an environment of safety, security, and support |
| Real-Life Experiences | Activities that provide students with the opportunity to explore and participate in professional, cultural, and civic environments |

Defining Impact: College & Career



At Hartem Children's Zone

| Key Tenet | Exemplary / Leading |
|-----------------------------------|---|
| Skill Building | Activities and experiences are designed to develop or deepen skills for college AND the workplace |
| Strong Advisory / Career Coaching | Individualized guidance comprehensively helps students through the transition to college |
| Social & Emotional Supports | Personal social services and resources designed to meet emotional and social needs that arise through the transition to college |
| College Match | Resources/activities help students identify colleges that fit their academic interests, financial needs, and desired culture |
| Partnerships | Connections to academic institutions and corporations that enable students to access unique learning opportunities |
| Career Coaching | Individualized coaching geared towards helping students identify and achieve their short- and long-term career goals |
| Career Exposure | Activities and resources designed to expose students to new fields and professions to inform their goals and career paths |
| Internships | Real work experiences help students gain valuable skills/experience, earn income, and begin to build a professional network |
| Alumni Tracking & Engagement | Systems maintain records on alumni in order to understand trends, inform future programming, and guide alumni engagement |

Thank You



At Harlem Children's Zone