



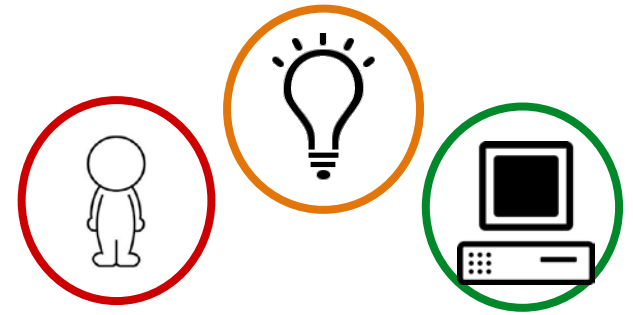
# City Mini Panel – Part II: *Personalization of Services*

**Moderator:** *Professor Paul Reville, HGSE & Founder, Education Redesign Lab*

**Panelists:**

- *Providence, RI - Mayor Jorge Elorza*
- *Oakland, CA - Mayor Libby Schaaf*
- *Newton, MA - Mayor Setti Warren*

# Personalization of Services



## NEWTON

- support social & emotional learning through access to OST opportunities and early childhood education

## OAKLAND

- setting students on a path to College and Career success - Future Centers

## PROVIDENCE

- curbing summer learning loss
- implementing strategies for personalized learning
- expanding supports for social emotional needs

# Table Question

Describe your working definition of personalization in your community and how your city is working to bring this vision to life.