

Education
Redesign
Lab

HARVARD



GRADUATE SCHOOL
OF EDUCATION

By **All** Means



Welcome Remarks

Professor Paul Reville, HGSE & Founder, Education Redesign Lab



By All Means May 2017 Convening

Pathways to Impact

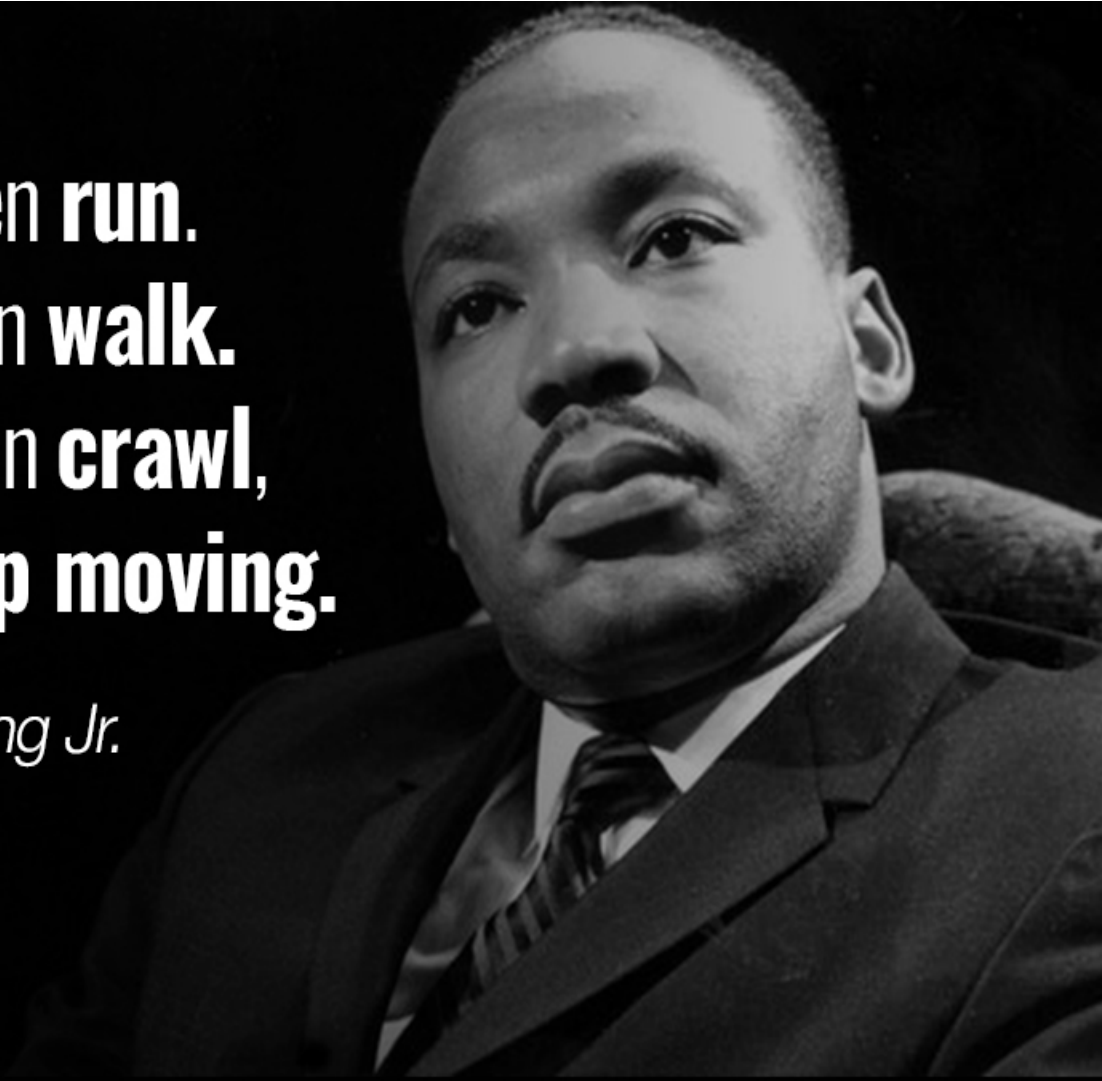
May 18, 2017

Paul Reville

*Francis Keppel Professor of Practice of Educational Policy and Administration
Harvard Graduate School of Education
Founding Director, Education Redesign Lab*

If you can't fly, then **run**.
If you can't run, then **walk**.
If you can't walk, then **crawl**,
but by all means, **keep moving**.

- *Martin Luther King Jr.*



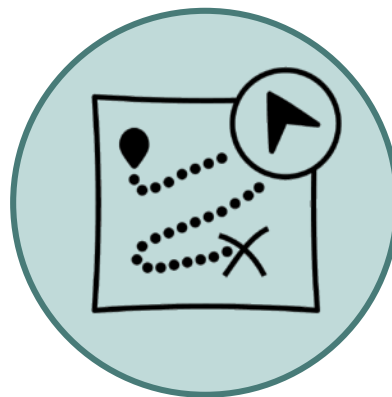


Convening Goals

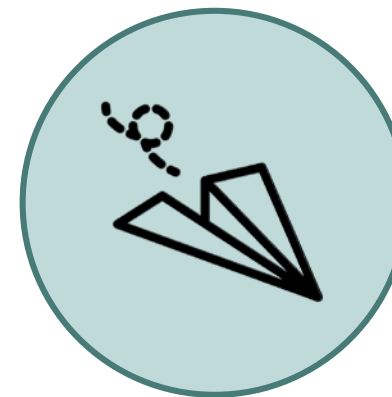
A year+ into this work together, *By All Means* cities have made real progress in **creating structures and strategies to *change* the way you provide education and youth services**, despite strong political headwinds at the national level, and in some cases at the state and local levels.



Where Are We?



**Where Are We
Going?**



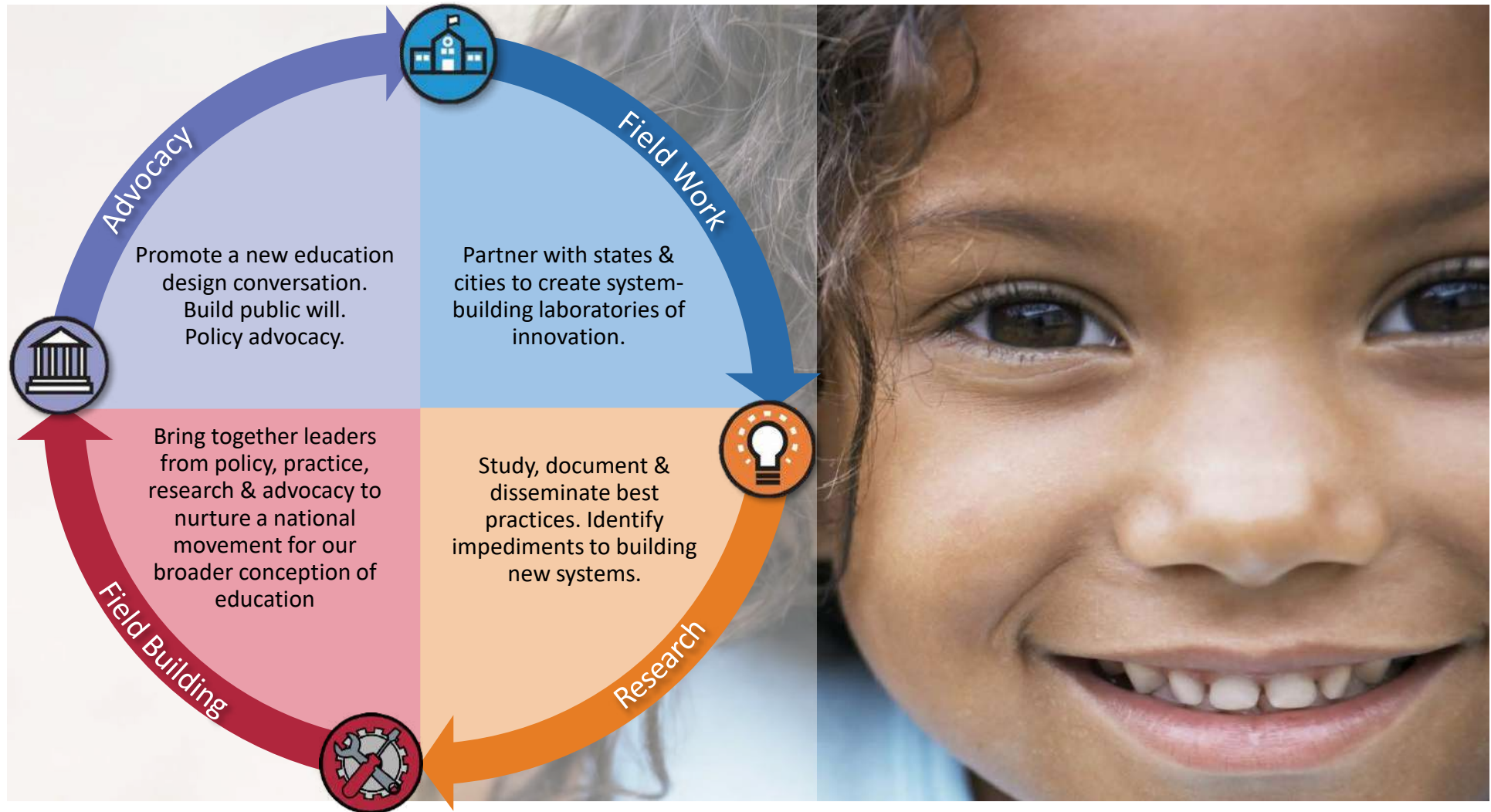
**How Do We Get
There?**

**Why does all this matter
more than ever before?**



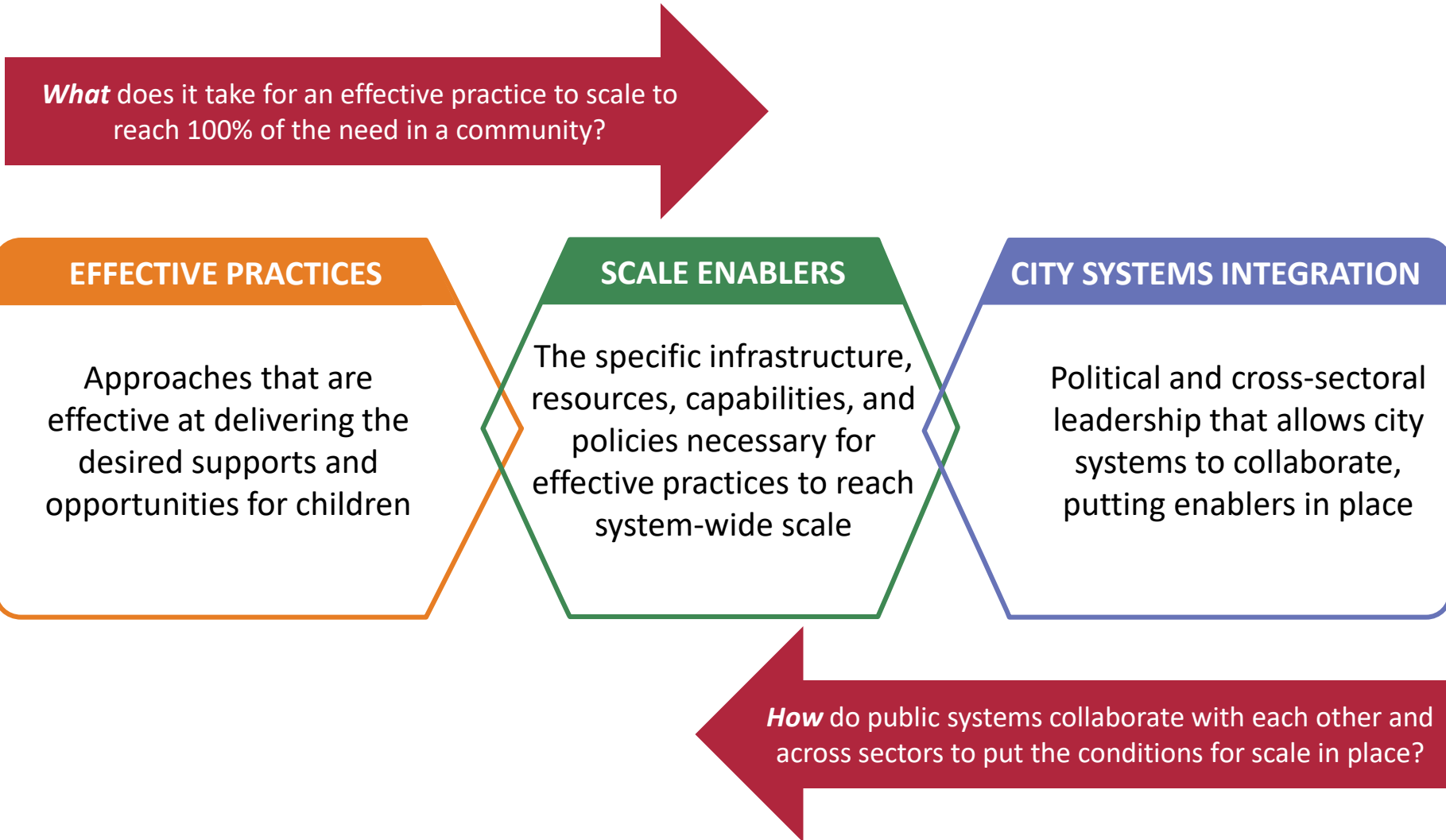


Education Redesign Lab's Integrated Strategy





Goal: Link integration at the system level to the creation of specific enablers needed to scale child-centered effective practices.





What Cabinets Are Doing



Cabinets Meet Regularly



Targeted Points of Entry



Preliminary Strategy
Development



Data Gathering



Identifying Success
Indicators



Developing
Communications
Strategies



Enlisting Broader-Based
Support



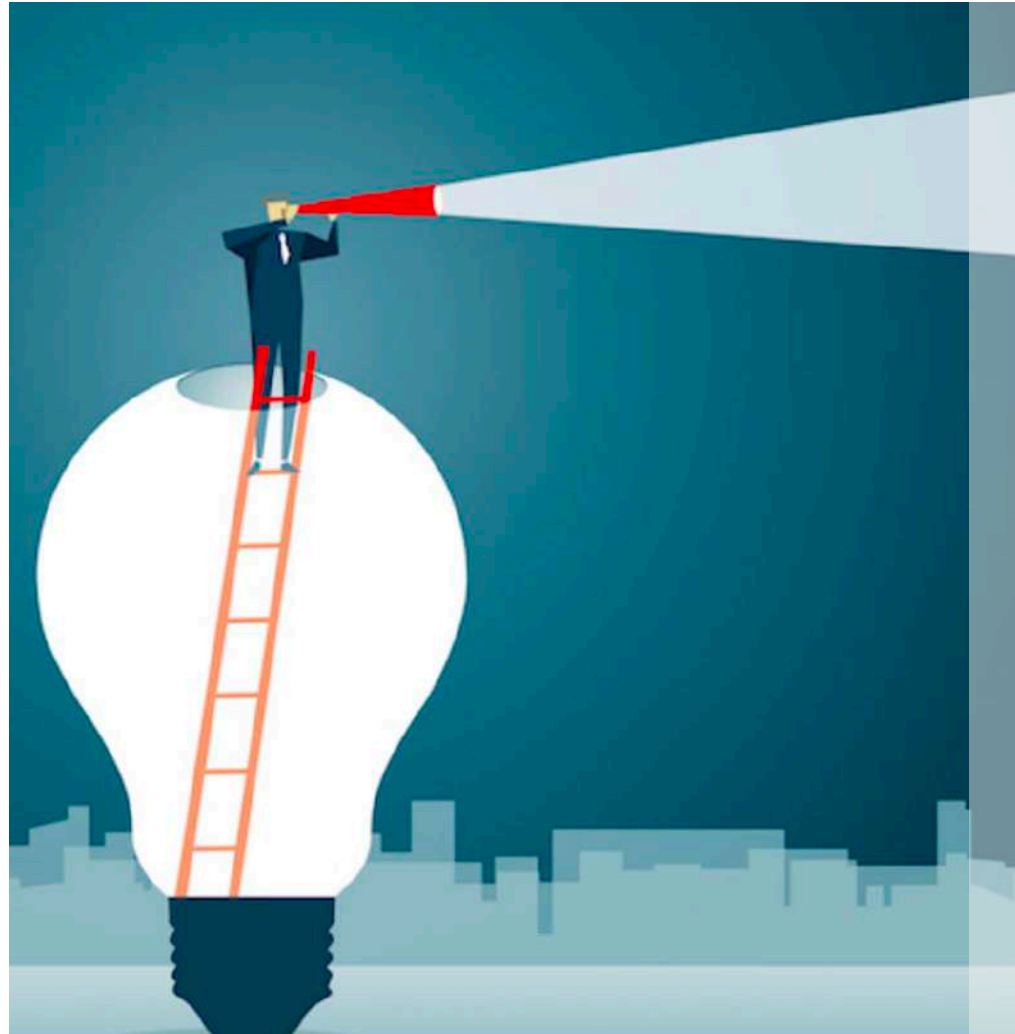
Searching for Financial
Resources



Engaging the
Community



Early Lessons



- Mayoral Leadership
- Data Support
- Community Engagement
- Money Matters
- Partnerships/Capacity
- Front Burner
- Time for Deliberation
- Cabinets
- Defining Success: Top Down/Bottom Up



Common Challenges

Sustainability -
Leadership Changes

Financing

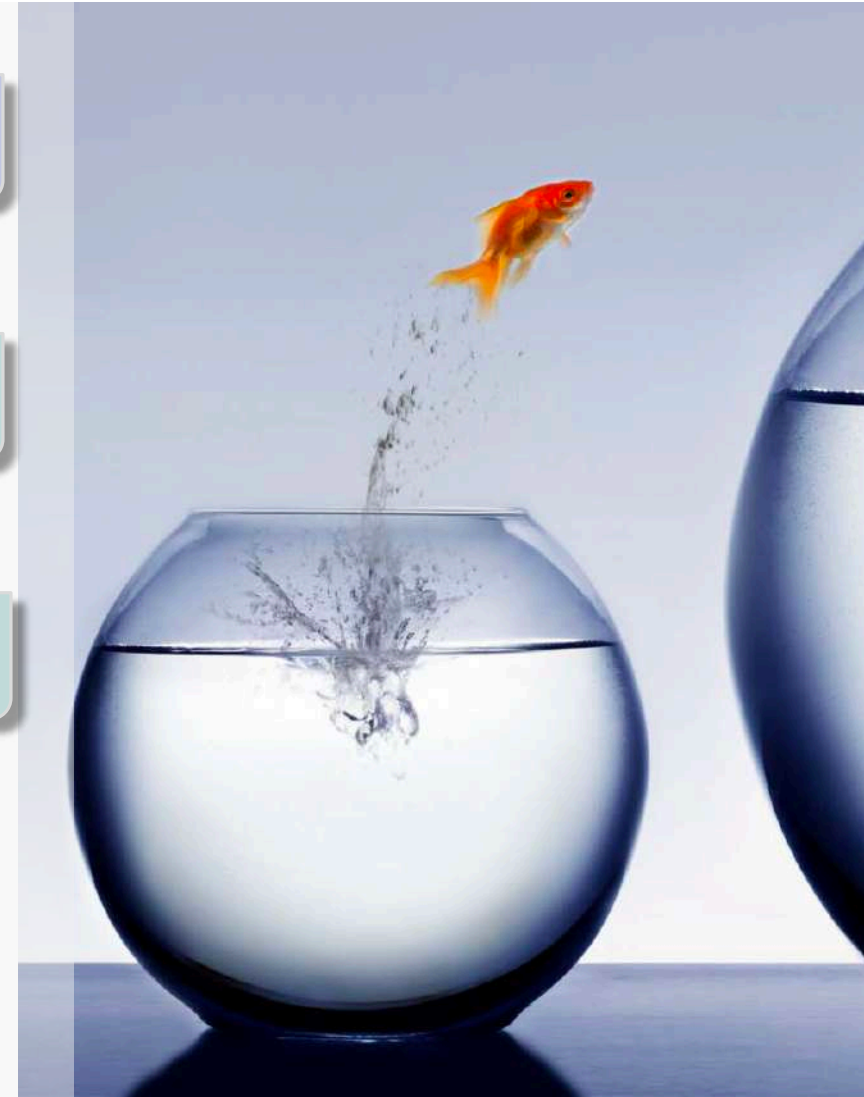
Data Systems &
Personalization

Systems Not Programs

Expanding Capacity -
Staffing

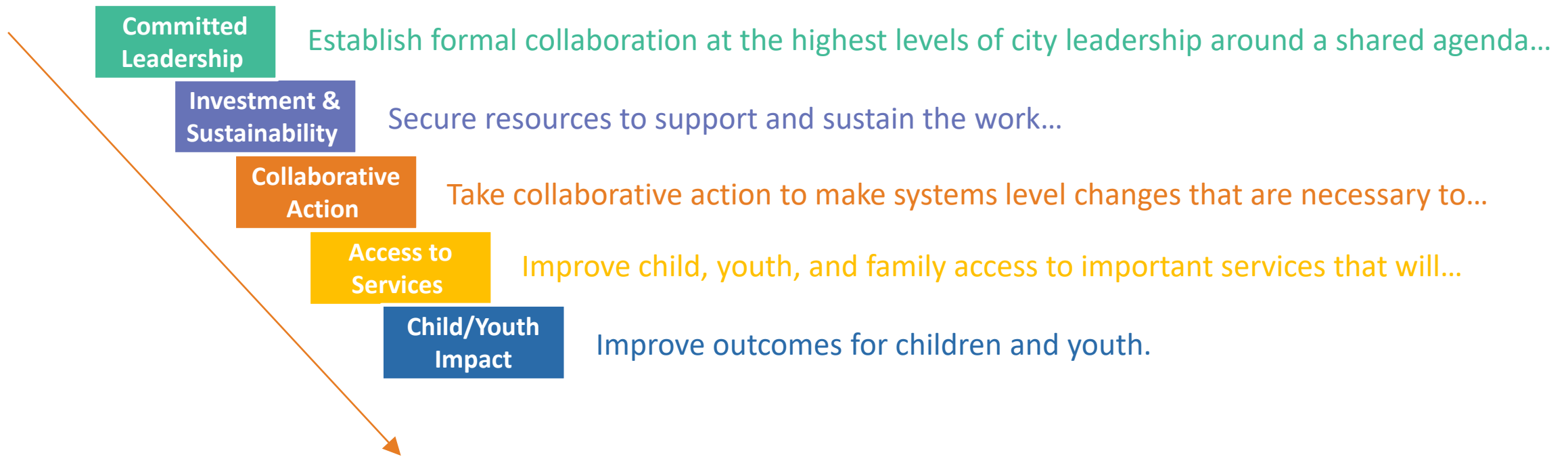
Restructuring Silos

Keeping momentum when faced
with obstacles (i.e. local politics,
funding challenges)



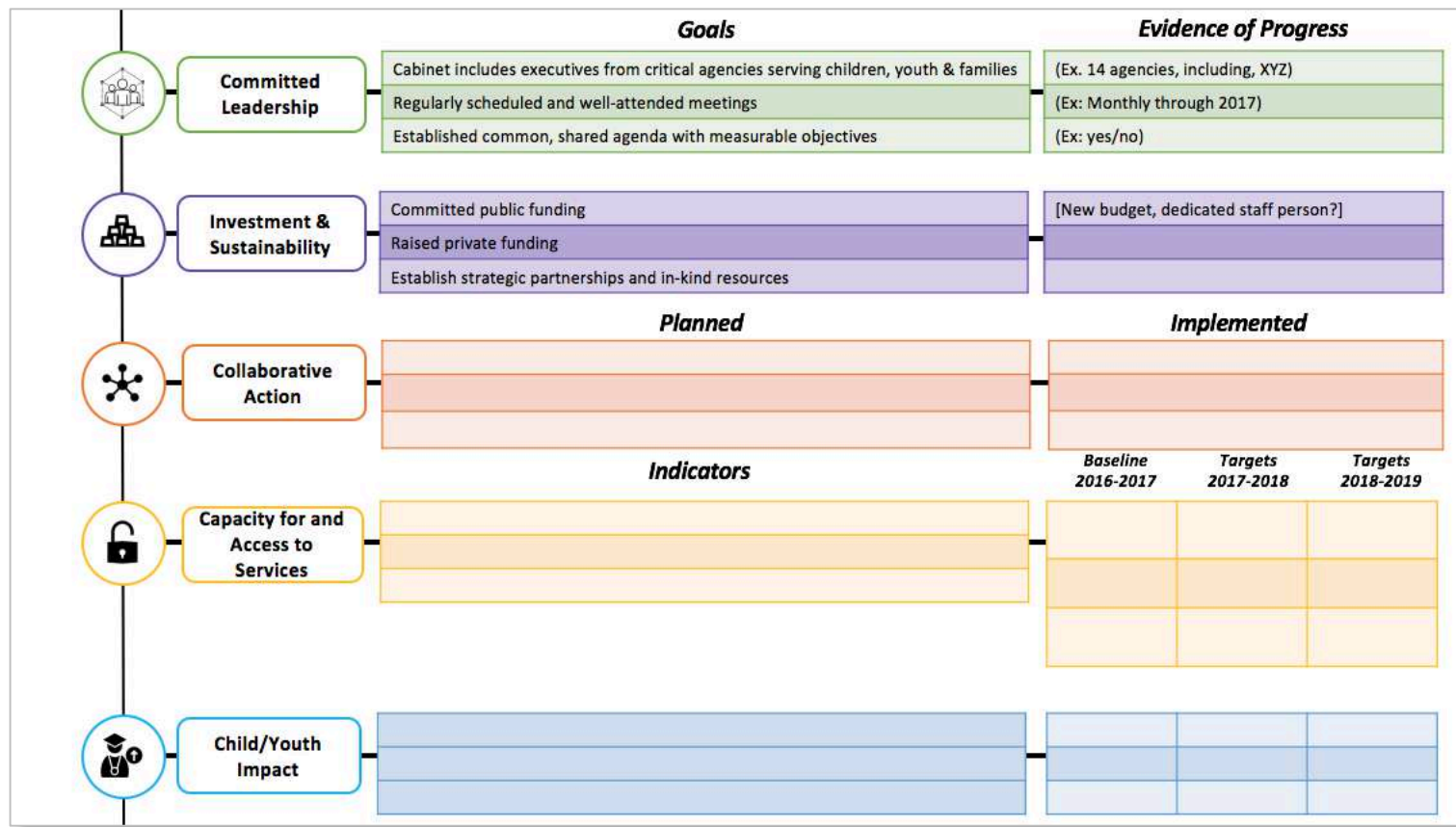


Measures of Success Document Cities' Efforts As They...





Measure of Success Framework





Day 1 – Thursday, May 18

9:00-11:00am	<u>City Team Mini Panels & Table Discussion: Sharing Breakthroughs & Challenge</u>
11:15-11:30am	Break
11:15-12:45pm	<u>Keynote Address: Equity and Collective Impact in Systems Change</u> Introductory Remarks - Harvard Graduate School of Education Dean James Ryan Keynote Remarks - Dr. Michael McAfee, President, PolicyLink
1:00-2:00pm	<u>Lunch - Gutman Library Reading Room, 1st Floor</u> * Louisville Team – Longfellow 228 ** VIP lunch: mayors, superintendents, VIPs – Eliot Lyman Room, Longfellow 2 nd Fl
2:00-2:15	Break
2:15-4:45pm	<u>City Team Time</u> (locations in folders)
4:45-5:15pm	Break
5:15-6:15pm	Travel – charter bus to Edward Kennedy Institute (meet at 5:15 @ pick-up location @ the corner of Appian Way and Brattle Street, prompt departure @ 5:30pm)
6:15-8:30pm	<u>By All Means Consortium Dinner Cocktails and Dinner</u> - Edward Kennedy Institute Remarks: President of Edward Kennedy Institute, Jean MacCormack



Day 2 – Friday, May 19

*7:30-8:45am	Early Breakfast with Ron Heifetz for mayors, superintendents and elected officials
8:00-8:45am	Breakfast
9:00-10:30am	Equity Issues in Systems Change Work <i>Supporting Immigrant and Undocumented Students</i> - Prof. Roberto Gonzales
10:30-10:45am	Break
10:45am-12:00pm	Breakout Sessions (see location sheet in folder) <ul style="list-style-type: none">- <i>Creative Local Financing to Support a Children's Agenda</i>- <i>Municipal & District Equity Policies and Practices</i>- <i>Integrating Health and Education</i>- <i>Research and Promising Practices in Social and Emotional Learning</i>- <i>Engaging the Community</i>
12:00-12:15pm	Break
12:15-2:30pm	Lunch – City Team Time (see location sheet in folders)
2:30-2:45pm	Break
2:45-3:45pm	Closing