



By All Means: Our Mission and Vision

Mission

Build the necessary systems of support and opportunity to ensure the well-being and successful education of each and every child

Vision

Comprehensive, sustainable, integrated, cradle-to-career systems that guarantee all students will be prepared to be successful in careers, citizenship, life, and lifelong learning

By All Means 2.0: Looking Forward

Strengthen Cabinets and community engagement

Secure sustainable resources

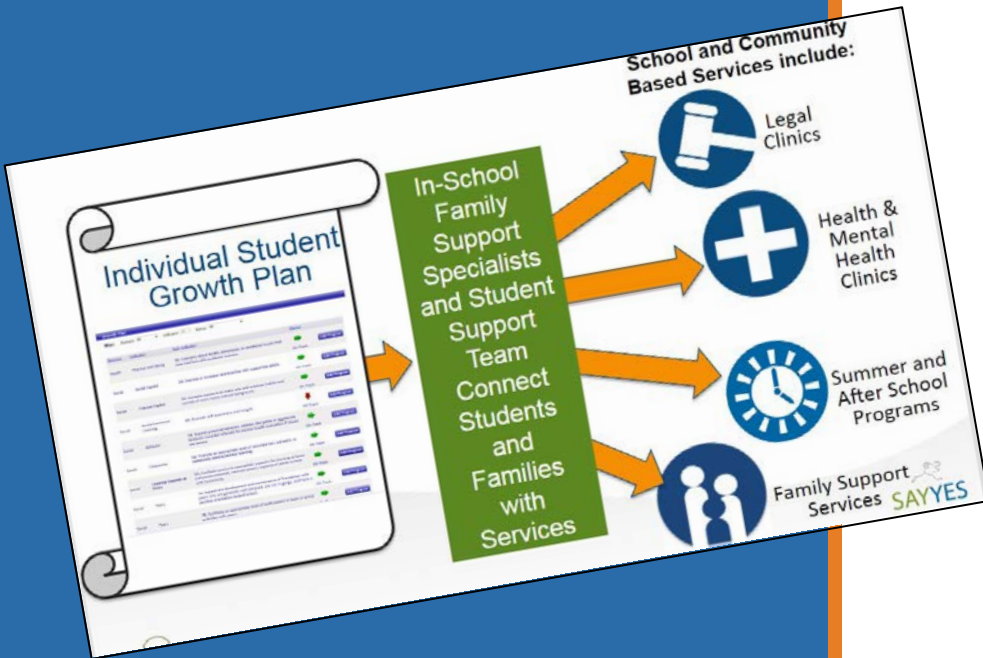
Use data effectively and track outcomes through the Measures of Success framework

Continue to expand services and opportunities for children and youth

Build on current efforts to develop Individual Student Success Plans (ISSPs)

What are Individual Student Success Plans (ISSPs)?

- ISSPs are both **living documents** and **processes** that:
 - Capture individual strengths and needs of each child
 - Encompass in-school and out-of-school factors reflecting the full breadth of each child's experience, including education, health, and general well-being
 - Provide a unique, customized portfolio that captures full history of each child and follows her to adulthood



ISSPs are a powerful tool to attain our ***All Means All*** vision by:

Capturing students' comprehensive in-school and out-of-school needs

Intentionally matching each student with tailored supports and services

Seamlessly coordinating a web of education and community resources to provide equitable opportunities for all students

What is the Lab's Role in Advancing ISSPs?

Understand current landscape and develop practical tools

- Conduct landscape analysis of best practices related to ISSPs (*draft in Fall 2018 and final in Winter 2018*)
- Create materials/resources highlighting key principles and components to support development and implementation (*Fall 2018*)

Support BAM 2.0 communities
(Ongoing)

- Guide communities in the development and implementation of ISSPs, building on the work each has already begun
- Help communities identify measures of success for their development of ISSPs